



# 2011 ULM Softball Game Notes

## 2011 Schedule,

FEBRUARY DATE	OPPONENT	TIME (CT)
11	(1) S.E. MISSOURI STATE	W, 11-3 (5)
	(1) NORTHWESTERN STATE	W, 8-0 (5)
12	(1) S.E. MISSOURI STATE	W, 6-1
	(1) EASTERN ILLINOIS	W, 2-1
13	(1) EASTERN ILLINOIS	L, 0-1
	(1) INDIANA STATE	W, 9-0 (6)
18	(2) vs Sam Houston State	W, 11-8
	(2) vs New Mexico State	L, 3-6
19	(2) vs No. 7 Oklahoma	L, 4-14 (5)
	(2) vs Southern Utah	L, 7-10 (8)
20	(2) vs Sam Houston State	W, 5-4 (8)
25	(3) vs Central Arkansas	L, 1-4
26	(3) vs No. 23 Houston	L, 0-8 (5)
	(3) vs Baylor	L, 1-2
27	(3) vs Sam Houston State	W, 5-4 (8)
	(3) vs Houston	L, 0-1
<b>MARCH</b>		
2	at Alcorn State	W, 5-4
4	(4) vs Furman	W, 12-3 (5)
	(4) vs No. 7 Tennessee	L, 1-3
5	(4) vs Georgia Southern	W, 10-5
	(4) vs Dutch National Team (exhib.)	L, 3-4
9	at Stephen F. Austin	L, 3-10
12	<b>* SOUTH ALABAMA (DH)</b>	L, 1-3
		L, 2-5
13	<b>* SOUTH ALABAMA</b>	W, 11-3 (5)
19	*at Troy (DH)	L, 0-3
		W, 6-5.
20	*at Troy	W, 7-1
22	<b>CENTENARY</b>	W, 8-0 (5)
23	<b>STEPHEN F. AUSTIN</b>	W, 11-2 (5)
26	<b>*MIDDLE TENNESSEE (DH)</b>	W, 9-8
		W, 5-3
27	<b>*MIDDLE TENNESSEE</b>	W, 15-12
31	<b>NICHOLLS STATE</b>	L, 5-7 (8)
<b>APRIL</b>		
2	*Florida Atlantic (DH)	L, 1-3
		W, 7-6
3	*Florida Atlantic	L, 4-6
9	<b>*FIU (DH)</b>	L, 2-5
		W, 8-7
10	<b>*FIU</b>	W, 1-0
12	at Grambling State	W, 7-0
16	*at North Texas (DH)	W, 7-2 (10)
		L, 1-8
17	*at North Texas	L, 1-2
19	<b>GRAMBLING STATE</b>	W, 8-0 (5)
22	*at Western Kentucky (DH)	L, 5-6
		L, 2-6
23	*at Western Kentucky	L, 6-7
26	at Arkansas (DH)	L, 0-1 (8)
	rained out	
28	at McNeese State	W, 3-2 (9)
29	<b>ALCORN STATE</b>	W, 6-1
<b>MAY</b>		
7	<b>*UL-LAFAYETTE (DH)</b>	L, 0-3
		L, 3-12 (6)
8	<b>*UL-LAFAYETTE</b>	L, 0-5
11	(5) vs. South Alabama	10 a.m.
12	(5) Sun Belt Tournament	TBA
13	(5) Sun Belt Tournament	TBA
14	(5) Sun Belt Tournament	TBA
19	NCAA Regionals	TBA
20	NCAA Regionals	TBA
21	NCAA Regionals	TBA
26	NCAA Super Regional	TBA
27	NCAA Super Regional	TBA
28	NCAA Super Regional	TBA
<b>JUNE</b>		
1-6	College World Series	TBA

### Home games in **BOLD CAPS**

\*Sun Belt Conference Match

(DH) - Double Header

Tournament Legend

- (1) ULM Mardi Gras Classic (Monroe, La.)
- (2) Troy Cox Classic (Las Cruces, N.M.)
- (3) QTI Powers Invitational (Waco, Texas)
- (4) Tennessee Classic (Knoxville, Tenn.)
- (5) Sun Belt Tournament (Lafayette, La.)



### ULM WARHAWKS

2011 Record..... 27-26  
SBC Record..... 10-14  
Last Week..... 0-3  
All-Time vs. South Alabama..... 5-10  
Last meeting ..... W, 11-3 (5)

### Game 1-- Sun Belt Tournament

#### ULM vs. South Alabama

Date .....Wed., May 11, 2011

Location .....Lafayette, La.

Field .....Lamson Park

First Pitch ..... 10 a.m.

Live Stats.....ulmwarhawks.com

Live Video .....sunbeltsports.org



### SOUTH ALABAMA JAGUARS

2011 Record..... 35-15  
SBC Record..... 14-10  
Last Week..... 1-1  
All-Time vs. ULM..... 10-5  
Last meeting ..... L, 3-11 (5)

### GAME PREVIEW:

ULM and South Alabama face each other for the second time this season in the first round of the 2011 Sun Belt Conference Championship Wednesday. The Jaguars were the only other Sun Belt team besides nationally ranked No. 25 UL-Lafayette to take a series from the Warhawks in Monroe, taking both games of the doubleheader 3-1 and 5-2 before ULM run-ruled them 11-3 in five innings in the finale.

### ULM LAST TIME OUT:

The Warhawks' bats fell cold over the weekend as they closed out the regular season by hosting in-state and Sun Belt rival No. 25 UL-Lafayette at home for a three-game series. The Ragin' Cajuns swept ULM after winning both games of the doubleheader 3-0 and 12-3 in six innings and claimed Sunday's contest 5-0.

### A LOOK AT SOUTH ALABAMA:

South Alabama ended the regular season with a 35-15 overall record and a 14-10 mark in league play to earn the No. 3 seed entering the Sun Belt Tournament. The Jaguars ended their regular season with a split doubleheader at Troy on Saturday where they lost 2-1 before winning the nightcap 4-3. South Alabama won every Sun Belt series they played this season with the exception of UL-Lafayette who swept them at home.

Five different Jaguars are batting over .300 this season led by Meghan Collins who averages .365. Jenny Stevens has a team-high 49 runs while Brittany Fowler leads a team-high three offensive categories including hits (5), RBIs (49), total bases (86), and triples (3).

### ULM NEWS AND NOTES

- The Warhawks have a proven history as an upset team at the Sun Belt Tournament and have won their first-round game all three years they have gone.
- In their first season at the tournament in 2008, the Warhawks shocked the league by winning three-straight games after earning the No. 8 seed to make it all the way to the championship game before falling to winner UL-Lafayette.
- ULM's placing sixth overall in Sun Belt play marks the highest regular season finish by the program since joining the Sun Belt in 2007. The No. 6 seeding is also the highest the Warhawks have ever received entering the Sun Belt Tournament.
- ULM has already surpassed its highest record of conference wins since joining the Sun Belt in 2007. The Warhawks currently sit at 10-11 in the league, marking the most Sun Belt Conference wins in a single season since ULM won nine games in 2008 and 2010.
- The Warhawks reached 27 wins this season after defeating Alcorn State, marking the most victories in a season since winning 27 games in 2006. ULM is just three games short of achieving the 30-win plateau for the first time since 2001.
- Janel Salanoa has collected 9th sacrifice flies this season, which ties ULM's single-season record.
- Roxy Cassel has a team-high 43 RBIs this season, and needs just three more to tie ULM's single season runs scored record.
- Tiffany Mills (13-14) had her best week of the season last week as she threw back-to-back complete extra-inning games against Arkansas and McNeese State for a 0.00 ERA. The redshirt sophomore picked up 10 strikeouts and allowed no earned runs on 17 hits in 16.2 innings of action.
- ULM continues to rank among the best of the nation statistically including sitting 18th in the NCAA in stolen bases per game (1.82) and 67th in double plays per game (0.32). ULM also ranks 69th in scoring (5.06).
- Nationally, three Warhawks rank in the top-50 in the NCAA. Stand-out player Brianna Love has six top-40 rankings, including 9th in runs per game (1.16), 11th in walks per game (0.86), 17th in slugging percentage (.838) 22nd in home runs (15), 34th in triples (4) and 37th in on base percentage (0.519). Janel Salanoa boasts one top-10 ranking as the seventh-toughest player to strikeout in the nation (38.0) and is 12th in sacrifice flies (4.0) and while Katie Girardi ranks 41st in walks per game (0.68).
- Jessica Olguin is the only Warhawk to have four hits in one game this season which happened in two separate occasions. Olguin did it first in a 4-for-4 performance in the second game against Troy Mar. 19. and repeated it after a 4-for-5 effort against Middle Tennessee Mar. 26.
- Coach Rosemary Holloway-Hill is in her 27th season at the helm of the ULM softball program and has amassed a 681-866-3 record for her career at ULM. Holloway-Hill took the Warhawks to the Sun Belt Conference Championship game in 2008 and boasts one All-American all-time in Sarah Dawson. Holloway-Hill also coached Lori Tande Bruscatto who was named to the ULM Athletic Hall of Fame in 2011.

## Media Relations

### ULM MEDIA RELATIONS CONTACT

Rachel Williams  
office: (318) 342-5461  
cell: (386) 852-0349  
fax: (318) 342-5464  
email: willliart@warhawks.ulm.edu

**POSTGAME INTERVIEWS** -- will be conducted at a designated location following a NCAA mandated 10-minute cooling-off period. ULM head coach Rosemary Holloway-Hill and selected players will be made available for interviews upon request. Media requests (at home) and for both ULM and opposing coaches and players should be made to the ULM softball SID. Opponent requests will be forwarded to the visiting SID. The Warhawk softball locker room is closed to the media.

**INTERVIEWS DURING THE WEEK** -- All interview requests must be arranged through Rachel Williams in the ULM Media Relations Office. Please contact Rachel Williams to arrange interviews during the week. Practice is closed, but arrangements can be made in advance if you are planning on shooting B-roll footage. Coach Holloway-Hill and ULM student-athletes are available for interviews on non-game days following practice or through special arrangements with Rachel Williams.

**ULMWARHAWKS.COM** -- All the latest scores, statistics and player information is available by accessing the softball section at ulmwarhawks.com. Game stories, previews, statistics, game notes and advisories will be sent to interested media via e-mail. Live stats for ULM fans are also available online at ulmwarhawks.com.

**ADDITIONAL SERVICES** -- In an effort to serve members of the media, the ULM Media Relations Office will, within reason and to the best of its ability, service all requests. Photographs of student-athletes or coaches will be made available for print or online media outlets unable to shoot a Warhawk basketball game. Photo credits must always read "Photograph courtesy of ulmwarhawks.com."

**RADIO** -- All radio stations wishing to broadcast the ULM Softball Complex should contact the ULM Media Relations Office at least one week prior to the event. Space will be provided for the official radio station of the visiting team; others will be accommodated as space permits. Phone lines must be arranged for all stations in advance.

**GAME NOTES** -- Media members can receive the Warhawk Softball game notes via e-mail by contacting Rachel Williams.

**WE ARE THE ULM WARHAWKS** -- We are ULM. In all references to Warhawk athletics, please use the acronym 'ULM'. The only other acceptable version is the full name of the institution, the University of Louisiana at Monroe. Any other reference, including Louisiana-Monroe, La.-Monroe, UL-Monroe, LMU, or simply Monroe are inaccurate. Refer to all ULM athletic teams as Warhawks including all women's teams. Lady Warhawks or Lady Hawks is not acceptable. Individual players may be referred to as a Warhawk.

### MORE RECORD BREAKING

Brianna Love continued to make her mark in the ULM record books at Western Kentucky when she hit her 42nd and 43rd career home runs to snap Lori Tande Bruscatto's previous record of 41. She also broke the runs scored record of 158 after scoring three against the Lady Toppers and now has 162 for her career.

Love also snapped two season records with a bomb against Alcorn State to set the single-season home run record of 15 and gives her 58 runs total, another single-season record.

### RIGHTY TO LEFTY

Jessica Olguin has had the biggest turnaround of any Warhawk batter from last season after making the switch from righty to lefty. After batting under .100 the last two seasons including .050 in 2010, Olguin is batting a team second-best .353 and leads in hits with 60. Before this season, Olguin totaled 42 career hits in three seasons.

### ROUTZON THROWS FIRST CAREER NO-HITTER

Stephanie Routzon threw her first career no-hitter against Grambling State Apr. 19, marking the first for ULM since Kandace Causey's in 2009. The freshman pitcher was just one hit batter away from a perfect game, which she did on the leadoff hitter of the game. She also collected a career-high seven strikeouts in the performance.

### QUICK ON THE TRACKS

ULM has consistently ranked in the top-15 in the nation in stolen bases this season and currently ranks 18th in the NCAA in stolen bases per game (1.82) and leads the Sun Belt Conference with 91 in 113 attempts, making ULM one of the fastest teams in the nation. ULM's 91 stolen bases also ranks fifth all-time for the most stolen bases in a season in program history, with the most being 161 bases on 184 attempts during the 1998 season.

Individually, Brianna Love ranks second in the Sun Belt in stolen bases with 26 in 30 attempts and 43rd in the nation (0.52). Jessica Olguin is second for ULM with 17 in 21 attempts.

### A SEASON OF FIRSTS

This has been a season of firsts for ULM, including claiming the program's first-ever series wins over formidable opponents Troy and FIU and its first-ever series sweep of Middle Tennessee. This also marks the first season ULM claimed the Preseason Player of the Year in back-to-back seasons.

### WALK IT OUT

Brianna Love is such a powerful batter that she has already collected 43 walks this season, matching her career-high 43 walks from last season. She also has a career-high eight intentional walks this season and totals 16 for her career. Love ranks 11th in the nation in walks per game (0.88) and second in the Sun Belt.

### 20-WIN PLATEAU

The Warhawks have already hit the 20-win threshold this season, picking up their 20th win with a 7-6 win over Florida Atlantic Apr. 2. This marks the second-straight season ULM has amassed 20 victories, including the fourth of five seasons in the Sun Belt.

### FRITZ MAKES HER MARK IN THE RECORD BOOKS

Heather Fritz moved into a tie for third all-time on the career save leaders list at ULM after holding off Florida Atlantic for ULM's lone win against the Owls this season. Fritz pitched the final inning of the nightcap of the doubleheader and notched

## 2011 Quick Facts

### UNIVERSITY

Location	Monroe, La.
Founded	1931
Enrollment	9,004
Nickname	Warhawks
Colors	Maroon and Gold
Mascot	Ace
Conference	Sun Belt
President	Dr. Nick J. Bruno
AD	Bobby Staub
SWA	Tasha Tisher
Athletics Phone	(318) 342-3ULM
Web Site	ulmwarhawks.com

### COACHING STAFF

Head Coach	Rosemary Holloway-Hill
Alma Mater	Oral Roberts, '77
Record at ULM (Seasons)	681-866-3 (26)
Assistant Coach	Sara Vogt
Alma Mater	Indiana, '03
Years at ULM	Third Season
Graduate Assistant	Paige Cassidy
Alma Mater	FIU, '10
Years at ULM	First Season

### TEAM INFORMATION

2010 Record	24-26
2010 Sun Belt Finish	9-14 (7th)
2010 Sun Belt Tournament Finish	Quarterfinals
2010 Postseason	didn't qualify
Letterwinners Returning/Lost	13/4
Starters Returning/Lost	7/2
Pitchers Returning/Lost	3/1
Newcomers	5

### FACILITY INFORMATION

Venue	ULM Softball Complex
Capacity	500
Dimensions (L-R)	200-210-220-210-200
Press Box Number	

### PROGRAM HISTORY

All-Time Record (Percentage)	758-954-3 (.443)
NCAA Tournament Appearances	1
Years	1997
NCAA Tournament Record	1-2

### SUN BELT HISTORY

All-Time SBC Record (Percentage)	31-58 (.361)
Sun Belt Tournament Appearances	3

## By The Numbers

ULM	SOUTH ALABAMA	
27-26	Record	35-15
.266	Batting Avg.	.304
4.83	Runs/Game	7.98
6.97	Hits/Game	5.9
64	Doubles	70
8	Triples	15
30	Home Runs	48
218	RBI	269
92-114	Stolen Bases	77-86
3.39	ERA	2.54
0.59	K/IP	1.09
1.62	K/BB	0.91
0.36	BB/IP	0.49
.952	Fielding %	.967

## 2011 Sun Belt Conference Standings (final)

Team	Conference			Overall		
	W	L	Pct.	W	L	Pct.
UL-Lafayette	19	5	.792	45	9	.833
Florida Atlantic	15	9	.625	31	24	.564
South Alabama	14	10	.583	35	15	.700
FIU	14	10	.583	30	25	.545
Troy	11	12	.478	30	25	.545
<b>ULM</b>	<b>10</b>	<b>14</b>	<b>.417</b>	<b>27</b>	<b>26</b>	<b>.509</b>
Western Kentucky	9	15	.375	29	27	.518
Middle Tennessee	8	16	.333	18	31	.367
North Texas	7	16	.304	22	30	.423

one hit, one walk and one strikeout to seal the 7-6 Sun Belt Conference win and earn her fifth career save.

Fritz also ranks ninth all-time at ULM in strikeouts with 133 over four seasons including 24 this season.

### SUN BELT PLAYER OF THE WEEK TWO-STRAIGHT WEEKS

Brianna Love picked up her second-consecutive Sun Belt Player of the Week honor after her outstanding performance at Florida Atlantic. In nine games she has amassed an eye-boggling 17 runs, 13 RBIs, 38 total bases, six home runs, seven stolen bases, three doubles, one triple and 10 walks, four intentional with a combined 15-for-24 performance for a .625 batting average.

### LOVE'S RECORD BREAKING SEASON

Brianna Love currently ranks in the top-10 of every career category tracked at ULM, including entering 2010 ranked first in career batting average (.357), first in slugging percentage (.693), first in on base percentage (.470) and first in base on balls (121).

In 2011 she has continued to snap records, including tying for first all-time in triples (14) while ranking fourth in doubles (36) and fourth in RBIs (115).

### LOVE PICKED PRESEASON PLAYER OF THE YEAR

For the second consecutive season, senior outfielder Brianna Love was selected as the Preseason Player of the Year by the nine head coaches of the Sun Belt Conference. Love earned her first Preseason Player of the Year in 2010.

### RANKED OPPONENTS IN 2011

ULM has faced three ranked opponents this season in No. 7 Tennessee, No. 10 Oklahoma and No. 23 Baylor. The Warhawks fell a combined 24-7 in those three games. The Warhawks will face one more ranked opponent this season in SBC and in-state rival No. 24 UL-Lafayette.

### ULM PICKED SEVENTH IN SBC

ULM softball was picked to finish seventh in the Sun Belt Conference this season after receiving 25 votes in the preseason poll. The Warhawks finished the 2010 season seventh overall. UL-Lafayette earned 80 votes and all but one first place vote to rank first.

### 2010 RECAP

The Warhawks finished 2010 with its winningest season since 2007, going 24-26 over-

all and 9-14 in SBC play. ULM's 24 wins are the most since it went 24-38 overall in 2007. It also marked the third 20-win season for the Warhawks since joining the Sun Belt in 2007.

### 2010 OFFENSIVE LEADER

Love ranked first in virtually every offensive category for ULM in 2010, including batting average (.394), runs scored (41), hits (54), homeruns (11) and stolen bases (15).

### ULM SIGNS THREE FOR 2012

The Warhawks landed three outstanding recruits as Alexis Cacioppo, Kayla Boening and Mackenzie Miller each signed National Letters of Intent for the 2012 season.

**Alexis Cacioppo**, a native of La Habra, Calif., is a multi-faceted player who will bring in experience at second base, shortstop and outfielder. Cacioppo has earned many accolades over the past three seasons including first-team All-League for three years straight, Rookie of the Year honors her freshman season and was named to the All-Tournament Team at the Diamond Barr HS softball tournament this past season.

**Kayla Boening**, a native of San Antonio, Texas, earned a spot on the first team all-state her sophomore and junior campaigns as a shortstop and was the District Defensive Most Valuable Player in 2009 and 2010 as a member of the Poth High School team. She also led the San Antonio area across all players in the 1A-5A classifications with a .593 batting average.

**Mackenzie Miller**, a native of Evergreen, Colo., has earned a slew of accolades over her three seasons with Conifer High School as a shortstop and utility player. A first team all-conference selection every season, she has three-consecutive Most Valuable Player honors from her high school team. She also earned an all-state honorable mention during the 2008-2009 season.

## 2011 Sun Belt Rankings

(as of 5/8/11)

OFFENSIVE	RANK
Batting Average (.266)	5th
Hits (369)	6th
Runs (256)	3rd
RBIs (218)	4th
Doubles (64)	6th
Triples (8)	T6th
Home Runs (30)	7th
Walks (163)	4th
<b>Stolen Bases (92)</b>	<b>1st</b>

PITCHING/DEFENSIVE	RANK
ERA (3.39)	6th
Hits (417)	8th
Runs (226)	6th
Earned Runs (168)	6th
Strikeouts (204)	8th
Walks (126)	4th
Fielding Percentage (.952)	6th
Errors (77)	4th

INDIVIDUALS	RANK
Roxy Cassel -- RBIs (43)	T6th
Heather Fritz -- earned run average (2.10)	4th
Katie Girardi -- walks (32)	3rd
Brianna Love -- batting average (.376)	5th
Brianna Love -- runs scored (58)	3rd
Brianna Love -- home runs (15)	4th
Brianna Love -- total bases (121)	5th
Brianna Love -- stolen bases (26-30)	2nd
Brianna Love -- doubles (12)	T6th
Brianna Love -- triples (4)	T4th
Brianna Love -- walks (45)	2nd
Brianna Love -- sac flies (3)	T4th
Miyuki Navarrete -- sac bunts (8)	T6th
Jessica Olquin -- batting average (.343)	9th
Jessica Olquin -- hits (61)	5th
Jessica Olquin -- stolen bases (17)	T5th
Melissa Rivera -- sac bunts (8)	T7th
Melissa Rivera -- doubles (11)	T10th
Janel Salanoa -- sac flies (4)	T2nd
Janel Salanoa -- doubles (11)	T10th

## 2011 NCAA Rankings

(as of 5/8/11)

OFFENSIVE (TOP-100 ONLY)	RANK
<b>Stolen Bases Per Game (1.82)</b>	<b>17th</b>
Scoring (5.06)	65th
Doubles Plays per Game (0.32)	66th
Doubles Per Game (1.26)	74th

INDIVIDUALS (TOP-100 ONLY)	RANK
Roxy Cassel -- RBIs per game (0.86)	98th
<b>Katie Girardi -- walks (0.68)</b>	<b>37th</b>
<b>Brianna Love -- walks (0.86)</b>	<b>12th</b>
<b>Brianna Love -- runs per game (1.16)</b>	<b>8th</b>
Brianna Love -- stolen bases (0.52)	38th
Brianna Love -- triples (4.0)	40th
<b>Brianna Love -- home runs (15.0)</b>	<b>27th</b>
<b>Brianna Love -- slugging percentage (0.838)</b>	<b>11th</b>
<b>Brianna Love -- sacrifice flies (3.0)</b>	<b>65th</b>
Brianna Love -- triples per game (0.08)	60th
Brianna Love -- one base percentage (0.519)	31st
Brianna Love -- home runs per game (0.3)	33rd
<b>Janel Salanoa -- toughest to strikeout (38.0)</b>	<b>5th</b>
<b>Janel Salanoa -- sacrifice flies (4.0)</b>	<b>13th</b>

# 2011 ULM Softball Team



## BY CLASS

Seniors..... Sarah Carriger  
 ..... Heather Fritz  
 ..... Brianna Love  
 ..... Jessica Olguin  
 ..... Melissa Rivera  
 Juniors ..... Roxy Cassel  
 ..... Jessica Chastka  
 ..... Katie Girardi  
 ..... Tiffany Mills  
 Sophomores..... Elena Di Mattia  
 ..... Charlotte Pastor  
 ..... Janel Salanoa  
 ..... Elise West  
 ..... Lacey Willis  
 Freshmen..... Regina Ayala  
 ..... Miyuki Navarrete  
 ..... Samantha Riojas  
 ..... Stephanie Routzon

## BY POSITION

C..... Roxy Cassel  
 ..... Katie Girardi  
 IF..... Sarah Carriger  
 ..... Jessica Olguin  
 ..... Charlotte Pastor  
 ..... Samantha Riojas  
 ..... Stephanie Routzon  
 ..... Janel Salanoa  
 ..... Elise West  
 OF..... Sarah Carriger  
 ..... Elena Di Mattia  
 ..... Brianna Love  
 ..... Miyuki Navarrete  
 ..... Melissa Rivera  
 P..... Jessica Chastka  
 ..... Heather Fritz  
 ..... Tiffany Mills  
 ..... Stephanie Routzon  
 UT..... Regina Ayala  
 ..... Lacey Willis  
 DP..... Roxane Cassel

## BY STATE

Arizona ..... Samantha Riojas  
 California ..... Regina Ayala  
 ..... Tiffany Mills  
 ..... Miyuki Navarrete  
 ..... Jessica Olguin  
 ..... Melissa Rivera  
 ..... Janel Salanoa  
 Colorado ..... Stephanie Routzon  
 Florida..... Katie Girardi  
 Kansas..... Heather Fritz  
 Louisiana..... Elena Di Mattia  
 ..... Charlotte Pastor  
 ..... Elise West  
 ..... Lacey Willis  
 Oklahoma..... Sarah Carriger  
 Texas..... Roxy Cassel  
 ..... Jessica Chastka  
 ..... Brianna Love

No.	Player	Pos.	B/T	Ht.	Yr.	Hometown(Previous School)
2	Lacey Willis	UT	L/R	5-2	So.	Winnfield, La. (Bossier Parish CC)
3	Elena Di Mattia	OF	L/R	5-4	So.	Sunset, La. (Beau Chene HS)
4	Brianna Love	OF	R/R	5-8	Sr.	Garland, Texas (Garland HS)
7	Miyuki Navarrete	OF	R/R	5-6	Fr.	San Jose, Calif. (Archbishop Mitty HS)
9	Jessica Olguin	IF	S/R	5-5	Sr.	Yorba Linda, Calif. (Esperanza HS)
10	Charlotte Pastor	IF	L/R	5-3	So.	Metairie, La. (St. Mary's Dominican HS)
12	Stephanie Routzon	P/IF	R/R	6-0	Fr.	Wheat Ridge, Colo. (Wheat Ridge HS)
13	Roxy Cassel	C/DP	R/R	5-8	Jr.	Deer Park, Texas (Deer Park HS)
14	Sarah Carriger	IF/OF	L/R	5-5	Sr.	Claremore, Okla. (Oklahoma State)
15	Jessica Chastka	P	R/R	5-8	Jr.	College Station, Texas (A&M Consolidated HS)
16	Janel Salanoa	IF	R/R	5-5	So.	San Jose, Calif. (Evergreen Valley HS)
17	Samantha Riojas	IF	R/R	5-6	Fr.	Phoenix, Ariz. (Centennial HS)
18	Elise West	IF	L/L	5-8	So.	Lafayette, La. (Lafayette HS)
19	Regina Ayala	UT	L/R	5-3	Fr.	Norwalk, Calif. (Santa Fe HS)
20	Melissa Rivera	OF	R/R	5-3	Sr.	Moreno Valley, Calif. (Canyon Springs HS)
22	Tiffany Mills	P	R/R	5-11	RSo.	Riverside, Calif. (Martin Luther King HS)
23	Heather Fritz	P	L/L	5-10	Sr.	Salina, Kan. (Salina HS South)
24	Katie Girardi	IF/C	R/R	5-8	Jr.	Pembroke Pines, Fla. (McArthur HS)

## COACHING STAFF

Head Coach: Rosemary Holloway-Hill, 27th Season (Oral Roberts, '77)  
 Assistant Coach: Sara Vogt, Third Season (Indiana, '03)  
 Graduate Assistant Coach: Paige Cassidy, First Season (FIU, '10)

## PRONUNCIATIONS

Regina Ayala ..... a-yall-a  
 Jessica Chastka ..... chas-t-ka  
 Elena DiMattia ..... de-matt-e-ah  
 Brianna Love ..... bre-on-ah  
 Miyuki Navarrete ..... me-you-key na-va-rhet  
 Jessica Olguin ..... ol-geen  
 Samantha Riojas ..... re-o-hoss  
 Stephanie Routzon ..... rout-zun  
 Janel Salanoa ..... sal-a-noah  
 Sara Vogt..... vote

## ULM's Record When...

<b>OVERALL</b>	<b>27-26</b>
<b>NON-CONFERENCE</b>	<b>17-12</b>
<b>LOUISIANA TEAMS</b>	<b>5-4</b>
<b>SUN BELT</b>	<b>10-14</b>
<b>VS. TOP 25</b>	<b>0-6</b>
<b>DAY GAMES</b>	<b>20-20</b>
<b>NIGHT GAMES</b>	<b>7-6</b>
<b>HOME</b>	<b>15-8</b>
<b>AWAY</b>	<b>7-13</b>
<b>NEUTRAL</b>	<b>5-5</b>
<b>FEBRUARY</b>	<b>8-8</b>
<b>MARCH</b>	<b>11-7</b>
<b>APRIL</b>	<b>8-9</b>
<b>MAY</b>	<b>0-3</b>
<b>SUNDAY</b>	<b>7-5</b>
<b>MONDAY</b>	<b>N/A</b>
<b>TUESDAY</b>	<b>3-1</b>
<b>WEDNESDAY</b>	<b>2-1</b>
<b>THURSDAY</b>	<b>1-1</b>
<b>FRIDAY</b>	<b>5-5</b>
<b>SATURDAY</b>	<b>9-13</b>
<b>SHUTOUTS</b>	<b>6-7</b>
<b>RUN-RULE GAMES</b>	<b>11-5</b>
<b>EXTRA-INNING GAMES</b>	<b>4-3</b>
<b>ONE-RUN GAMES</b>	<b>10-7</b>
<b>TWO-RUN GAMES</b>	<b>1-5</b>
<b>FIVE-RUN + GAMES</b>	<b>14-6</b>
<b>SCORED FIRST</b>	<b>19-4</b>
<b>OPPONENT SCORED FIRST</b>	<b>8-22</b>
<b>SCORED IN 1st INNING</b>	<b>16-7</b>
<b>OPPONENT SCORED IN 1st INNING</b>	<b>9-13</b>
<b>SCORED 0-2 RUNS</b>	<b>2-17</b>
<b>SCORED 3-5 RUNS</b>	<b>5-7</b>
<b>SCORED 6-9 RUNS</b>	<b>13-2</b>
<b>SCORED 10 + RUNS</b>	<b>7-0</b>
<b>OPPONENT SCORED 0-2 RUNS</b>	<b>13-5</b>
<b>OPPONENT SCORED 3-5 RUNS</b>	<b>9-9</b>
<b>OPPONENT SCORED 6-9 RUNS</b>	<b>4-8</b>
<b>OPPONENT SCORED 10 + RUNS</b>	<b>1-4</b>
<b>OUT-HIT OPPONENT</b>	<b>17-0</b>
<b>OUT-HIT BY OPPONENT</b>	<b>6-22</b>
<b>HITS ARE TIED</b>	<b>4-4</b>
<b>MADE 0 ERRORS</b>	<b>11-5</b>
<b>MADE 1 ERRORS</b>	<b>7-5</b>
<b>MADE 2+ ERRORS</b>	<b>9-16</b>
<b>OPPONENT MADE 0 ERRORS</b>	<b>2-10</b>
<b>OPPONENT MADE 1 + ERRORS</b>	<b>7-8</b>
<b>OPPONENT MADE 2+ ERRORS</b>	<b>18-8</b>
<b>HIT 0 HOME RUNS</b>	<b>13-18</b>
<b>HIT 1 HOME RUN</b>	<b>8-7</b>
<b>HIT 2+ HOME RUNS</b>	<b>6-1</b>
<b>AFTER 4 LEADING</b>	<b>16-3</b>
<b>AFTER 4 TRAILING</b>	<b>5-17</b>
<b>AFTER 4 TIED</b>	<b>6-5</b>
<b>AFTER 5 LEADING</b>	<b>10-1</b>
<b>AFTER 5 TRAILING</b>	<b>2-20</b>
<b>AFTER 5 TIED</b>	<b>8-3</b>
<b>AFTER 6 LEADING</b>	<b>12-1</b>
<b>AFTER 6 TRAILING</b>	<b>2-21</b>
<b>AFTER 6 TIED</b>	<b>5-1</b>

## Head Coach Rosemary Holloway-Hill

With 26 years in the dugout for the ULM softball team, Rosemary Holloway-Hill enters the 2011 season as the longest tenured of all the current Warhawks head coaches. The dean of the ULM coaching family, Holloway-Hill enters her 27th season as softball skipper with more victories than any head coach in any sport in Warhawks history.

Entering the 2011 season, Holloway-Hill has led the Warhawks to 654 wins, three conference championships and two postseason appearances. Her 654 victories rank 31st among all NCAA active coaches. In the fall of 2009 she was honored at the National Fastpitch Coaches Association after reaching her 700th career coaching victory. Holloway-Hill also coached ULM's only All-American Sarah Dawson.

Holloway-Hill took the Warhawks to the Sun Belt Tournament for the third time in program history last season and made a run at the championship after pulling out an upset over No. 2 seed FIU in the first round. ULM claimed another win over No. 8 Middle Tennessee before eventually falling to the 2011 Sun Belt champions UL-Lafayette.

The longtime mentor of the ULM softball program, Holloway-Hill has constantly challenged her teams by playing some of the top talent in the nation. The 2007 season brought new challenges as the Warhawks played their first season in the highly competitive Sun Belt Conference. Despite finishing ninth in the league in its inaugural campaign, ULM once again finished with a winning record at home and tallied victories over the league's top three teams.

In addition to producing talented and winning teams on the diamond, Holloway-Hill has stressed that her student athletes enjoy a balanced collegiate experience. Community service and academics have been fundamental values within the Warhawks softball program thanks to the emphasis Holloway-Hill has placed on them. Since becoming head coach, 15 players have been named National Fastpitch Coaches Association All-America Scholar Athletes.

ULM's 2005 squad and Holloway-Hill were recognized by the NFCA for having one of the top academic records in the nation. On a list of the top cumulative grade point averages for the 2003-04 academic season, Holloway-Hill's squad ranked 77th overall with a 2.816 GPA, the highest in the Southland Conference and the second highest in the state of Louisiana.

As good as ULM has been in the classroom under Holloway-Hill, they have been even better on the field. In addition to having the most wins in ULM history, her 238 victories from the program's days in the Southland Conference were the most by any school in that league. Holloway-Hill posted her 200th-career win against the SLC came in a 5-2 decision over McNeese State on April 21, 2001.

Following the 2004 season, the NFCA recognized ULM's achievements on the softball field when its All-Time Top 50 poll was released. ULM was ranked No. 43 amongst the more than 250 Division I softball programs in the nation, the highest in the Southland Conference and the third highest amongst all the schools in the state of Louisiana. The top 50 ranking was compiled using weekly USA Today/NFCA polls from 1995 through 2003.

Holloway-Hill came to what was then Northeast Louisiana University in 1984 as an assistant coach to Mary Jo Murray before becoming the program's fifth head coach the following season. She promptly guided the Warhawks to the Southland Conference Tournament championship - the university's first - in her first season as head coach in 1985. Her 1986 squad also claimed the tournament title.

In 1992, ULM finished in second in the conference race but the team's record against a strong schedule - a trademark of a Holloway-Hill team - earned it the chance to compete in the National Invitational Championships in Macomb, Ill., a tournament for leading teams which did not make the NCAA playoffs. ULM won the tournament with a 6-1 record, defeating Ivy League champion Princeton in the finals, 3-0.

Holloway-Hill's greatest team came five years later. The 1997 edition, led by All-American pitcher Sarah Dawson, won the Southland Conference championship, posted a 47-12 record, was ranked No. 18 in the nation, and competed in the NCAA tournament before being defeated by eventual national runner-up UCLA.

Following the 1997 season, Holloway-Hill garnered numerous coaching honors. She was named Southland Conference Coach of the Year by her peers in the coaching ranks, Louisiana Coach of the Year by the Louisiana Sports Writers Association, and South Region Coach of the Year by the NFCA.



## HOME RUNS THIS SEASON

No.	Date	Opp.	Batter	Inning	ROB	Count	Note
30.	04/29	Alcorn State	Love (15)	1st	0	3-2	
29.	04/23	Western Kentucky	Love (14)	7th	0	2-0	
28.	04/23	Western Kentucky	Cassel (5)	6th	0	0-0	
27.	04/22	Western Kentucky	Love (13)	7th	0	1-0	
26.	04/16	North Texas	Love (12)	3rd	0	2-0	
25.	04/3	Florida Atlantic	Love (11)	3rd	1	0-0	
24.	04/2	Florida Atlantic	Love (10)	6th	1	2-0	
23.	04/2	Florida Atlantic	Salanoa (7)	3rd	0	0-0	
22.	03/31	Nicholls State	Love (9)	6th	0	1-1	
21.	03/27	Middle Tennessee	Cassel (4)	7th	3	1-0	WO GS
20.	03/27	Middle Tennessee	Love (8)	5th	3	1-0	GS
19.	03/26	Middle Tennessee	Salanoa (6)	6th	1	1-0	
18.	03/26	Middle Tennessee	Love (7)	6th	0	1-1	
17.	03/26	Middle Tennessee	Salanoa (5)	3rd	1	2-2	
16.	03/26	Middle Tennessee	Cassel (3)	3rd	0	2-1	
15.	03/23	Stephen F. Austin	Love (6)	2nd	1	2-0	
14.	03/13	South Alabama	Love (5)	5th	1	1-0	WO
13.	03/13	South Alabama	Cassel (2)	1st	2	1-2	
12.	03/5	Georgia Southern	Salanoa (4)	1st	1	2-0	
11.	03/4	No. 7 Tennessee	Love (4)	1st	0	2-2	LO
10.	03/4	Furman	Salanoa (3)	3rd	0	1-1	
9.	03/4	Furman	Cassel (1)	3rd	1	3-1	
8.	03/4	Furman	Love (3)	3rd	0	2-0	
7.	02/27	Sam Houston State	Love (2)	2nd	1	2-1	
6.	02/20	Sam Houston State	Salanoa (2)	2nd	0	---	LO
5.	02/19	No. 6 Oklahoma	Love (1)	4th	0	---	
4.	02/19	No. 6 Oklahoma	Navarrete (1)	4th	1	---	
3.	02/18	Sam Houston State	Riojas (1)	5th	0	---	
2.	02/11	Northwestern State	Girardi (1)	4th	0	2-2	LO
1.	02/11	SE Missouri State	Salanoa (1)	2nd	2	2-2	

# 2011 Results

DATE	OPPONENT	RESULT	ULM R/H/E	OPP R/H/E	RECORD	SUN BELT	PITCHER OF RECORD	ATT	TIME
Feb. 11	(1) SE Missouri State	W, 11-3 (5)	11-9-0	3-4-6	1-0	0-0	Mills (W, 1-0)	220	1:42
Feb. 11	(1) Northwestern State	W, 8-0 (5)	8-5-1	0-4-3	2-0	0-0	Routzon (W, 1-0)	220	2:00
Feb. 12	(1) SE Missouri State	W, 6-1	6-10-1	1-7-0	3-0	0-0	Chastka (W, 1-0)	234	1:58
Feb. 12	(1) Eastern Illinois	W, 2-1	2-3-3	1-4-3	4-0	0-0	Mills (W, 2-0)	145	1:30
Feb. 13	(1) Eastern Illinois	L, 0-1	0-4-0	1-8-0	4-1	0-0	Routzon (L, 1-1)	176	1:47
Feb. 13	(1) Indiana State	W, 9-0 (6)	9-9-0	0-7-2	5-1	0-0	Mills (W, 3-0)	211	1:46
Feb. 18	(2) vs. Sam Houston State	W, 11-8	11-13-1	8-14-1	6-1	0-0	Routzon (W, 2-1)	462	2:00
Feb. 18	(2) at New Mexico State	L, 3-6	3-8-2	6-9-0	6-2	0-0	Mills (L, 3-1)	462	1:55
Feb. 19	(2) vs. No. 6 Oklahoma	L, 4-14 (5)	4-7-2	14-15-1	6-3	0-0	Mills (L, 3-2)	340	1:46
Feb. 19	(2) vs. Southern Utah	L, 7-10 (8)	7-7-5	10-14-4	6-4	0-0	Fritz (L, 0-1)	340	2:31
Feb. 20	(2) vs. Sam Houston State	W, 5-4 (8)	5-6-1	4-12-2	7-4	0-0	Routzon (W, 3-1)	0	1:55
Feb. 25	(3) vs. Central Arkansas	L, 1-4	1-3-3	4-5-1	7-5	0-0	Chastka (L, 1-1)	0	1:40
Feb. 26	(3) vs. No. 23 Houston	L, 0-8 (5)	0-0-2	8-12-1	7-6	0-0	Routzon (L, 3-2)	0	1:34
Feb. 26	(3) at Baylor	L, 1-2	1-4-4	2-7-0	7-7	0-0	Mills (L, 3-3)	1103	1:37
Feb. 27	(3) vs. Sam Houston State	W, 5-4 (8)	5-14-0	4-10-0	8-7	0-0	Fritz (1-1)	0	2:23
Feb. 27	(3) vs. No. 23 Houston	L, 0-1	0-5-0	1-5-1	8-8	0-0	Mills (L, 3-4)	0	1:55
Mar. 3	at Alcorn State	W, 5-4	5-7-0	4-5-5	9-8	0-0	Mills (W, 4-4)	115	1:50
Mar. 4	(4) vs. Furman	W, 12-3 (5)	12-14-0	3-5-2	10-8	0-0	Routzon (W, 4-2)	0	1:28
Mar. 4	(4) at No. Tennessee	L, 1-3	1-2-0	3-9-0	10-9	0-0	Mills (L, 4-5)	623	1:38
Mar. 5	(4) vs. Georgia Southern	W, 10-5	10-10-0	5-8-1	11-9	0-0	Mills (W, 5-5)	0	1:58
Mar. 9	at Stephen F. Austin	L, 3-10	3-9-4	10-9-2	11-10	0-0	Mills (L, 5-6)	114	2:02
Mar. 12	* South Alabama	L, 1-3	1-4-0	3-4-1	11-11	0-1	Mills (L, 5-7)	50	2:08
Mar. 12	* South Alabama	L, 2-5	2-6-4	5-10-1	11-12	0-2	Routzon (L, 4-3)	76	2:10
Mar. 13	* South Alabama	W, 11-3 (5)	11-12-2	3-5-3	12-12	1-2	Mills (W, 6-7)	36	1:51
Mar. 19	* at Troy	L, 0-3	0-3-2	3-7-0	12-13	1-3	Mills (L, 6-8)	-	1:39
Mar. 19	* at Troy	W, 6-5	6-10-0	5-12-1	13-13	2-3	Chastka (W, 2-1)	450	2:12
Mar. 20	* at Troy	W, 7-1	7-7-1	1-4-4	14-13	3-3	Mills (W, 7-8)	211	1:51
Mar. 22	Centenary	W, 8-0 (5)	8-9-2	0-0-2	15-13	3-3	Routzon (W, 5-3)	56	1:16
Mar. 23	Stephen F. Austin	W, 11-2 (5)	11-12-0	2-5-1	16-13	3-3	Mills (W, 8-8)	43	1:38
Mar. 26	* Middle Tennessee	W, 9-8	9-15-4	8-8-2	17-13	4-3	Chastka (W, 3-1)	-	2:28
Mar. 26	* Middle Tennessee	W, 5-3	5-8-1	3-8-1	18-13	5-3	Mills (W, 9-8)	76	1:48
Mar. 27	* Middle Tennessee	W, 15-12	15-15-2	12-18-1	19-13	6-3	Mills (W, 10-8)	80	2:44
Mar. 31	Nicholls State	L, 5-7 (8)	5-9-1	7-9-2	19-14	6-3	Routzon (L, 5-4)	105	2:27
Apr. 2	* at Florida Atlantic	L, 1-3	1-4-1	3-6-2	19-15	6-4	Mills (L, 10-9)	130	1:30
Apr. 2	* at Florida Atlantic	W, 7-6	7-11-0	6-8-2	20-15	7-4	Routzon (W, 6-4)	173	2:10
Apr. 3	* at Florida Atlantic	L, 6-4	4-6-2	6-7-1	20-16	7-5	Mills (L, 10-10)	183	1:45
Apr. 9	* FIU	L, 2-5	2-4-3	5-9-0	20-17	7-6	Mills (L, 10-11)	63	2:05
Apr. 9	* FIU	W, 8-7	8-9-2	7-9-3	21-17	8-6	Chastka (W, 4-1)	85	2:14
Apr. 10	* FIU	W, 1-0	1-4-1	0-2-1	22-17	9-6	Routzon (W, 7-4)	203	1:34
Apr. 15	at Grambling State	W, 7-0	7-9-0	0-2-5	23-17	9-6	Mills (W, 11-11)	150	1:50
Apr. 16	* at North Texas	W, 7-2 (10)	7-7-3	2-7-3	24-17	10-6	Mills (W, 12-11)	275	2:40
Apr. 16	* at North Texas	L, 1-8	1-2-2	8-10-0	24-18	10-7	Routzon (L, 7-5)	275	1:35
Apr. 17	* at North Texas	L, 1-2	1-5-0	2-7-1	24-19	10-8	Mills (L, 12-12)	200	1:40
Apr. 19	Grambling State	W, 8-0 (5)	8-7-0	0-0-4	25-19	10-8	Routzon (W, 8-5)	48	1:18
Apr. 22	* at Western Kentucky	L, 5-6	5-6-2	6-10-3	25-20	10-9	Mills (L, 12-13)	122	1:57
Apr. 22	* at Western Kentucky	L, 2-6	2-6-1	6-8-2	25-21	10-10	Routzon (L, 8-6)	122	1:50
Apr. 23	* at Western Kentucky	L, 6-7	6-6-1	7-13-2	25-22	10-11	Fritz (L, 1-2)	120	1:59
Apr. 26	at Arkansas	L, 0-1 (8)	0-4-2	1-8-2	25-23	10-11	Mills (L, 12-14)	-	2:08
Apr. 28	at McNeese State	W, 3-2 (9)	3-6-2	2-9-1	26-23	10-11	Mills (W, 13-14)	177	2:23
Apr. 29	Alcorn State	W, 6-1	6-7-2	1-7-2	27-23	10-11	Chastka (W, 5-1)	79	1:53
May 7	* No. 24 UL-Lafayette	L, 0-3	0-0-2	3-6-0	27-24	10-12	Mills (L, 13-15)	-	1:59
May 7	* No. 24 UL-Lafayette	L, 3-12 (6)	3-5-2	12-13-0	27-25	10-13	Routzon (L, 8-7)	611	1:53
May 8	* No. 24 UL-Lafayette	L, 0-5	0-2-1	5-11-0	27-26	10-14	Mills (L, 13-16)	362	2:17

## home games in bold

(1) ULM Mardi Gras Classic (Monroe, La.)

(2) Troy Cox Classic (Las Cruces, N.M.)

(3) QTI Powers Invitational (Waco, Texas)

(4) Tennessee Classic (Knoxville, Tenn.)

\* Sun Belt Conference games

**2011 ULM Warhawk Softball  
Overall Statistics for ULM (as of May 09, 2011)  
(All games Sorted by Batting avg)**

Record: 27-26 Home: 15-8 Away: 7-13 Neutral: 5-5 Sun Belt: 10-14

Player	avg	gp-gs	ab	r	h	2b	3b	hr	rbi	tb	slg%	bb	hp	so	gdp	ob%	sf	sh	sb-att	po	a	e	fld%	
Love, Brianna	.376	53-53	149	58	56	12	4	15	39	121	.812	45	1	21	0	.515	3	0	27-31	68	13	3	.964	
Olguin, Jessica	.345	53-53	177	37	61	6	1	0	18	69	.390	10	2	22	0	.386	0	5	17-21	34	2	2	.947	
Salanoa, Janel	.323	52-51	161	32	52	11	1	7	35	86	.534	13	3	5	0	.376	4	2	9-12	74	104	21	.894	
Cassel, Roxane	.265	53-53	155	24	41	7	0	5	43	63	.406	28	2	26	0	.384	0	4	4-4	223	32	8	.970	
Rivera, Melissa	.242	53-53	165	12	40	11	0	0	26	51	.309	4	1	18	2	.265	0	7	3-3	47	0	0	1.000	
West, Elise	.234	42-42	111	9	26	2	0	0	6	28	.252	7	8	36	0	.325	0	1	5-5	296	18	5	.984	
Navarrete, Miyuki	.221	53-53	140	31	31	2	0	1	14	36	.257	12	3	22	1	.297	0	8	15-20	142	120	12	.956	
Girardi, Katie	.200	49-47	115	9	23	5	1	1	19	33	.287	32	4	40	0	.386	2	3	2-4	111	48	8	.952	
-----																								
Riojas, Samantha	.209	37-33	91	11	19	5	1	1	7	29	.319	3	1	23	1	.242	0	1	1-2	15	38	8	.869	
Ayala, Regina	.195	34-29	77	7	15	3	0	0	11	18	.234	6	1	11	0	.262	0	2	0-0	7	12	3	.864	
Dimattia, Elena	.167	39-1	6	15	1	0	0	0	0	1	.167	0	0	3	0	.167	0	0	5-6	0	0	0	.000	
Pastor, Charlotte	.108	28-9	37	6	4	0	0	0	0	4	.108	3	2	21	1	.214	0	0	1-2	8	4	1	.923	
Willis, Lacey	.000	16-0	1	5	0	0	0	0	0	0	.000	0	0	1	0	.000	0	0	3-4	2	0	0	1.000	
Totals	.266	53	1385	256	369	64	8	30	218	539	.389	163	28	249	5	.353	9	33	92-114	1040	494	77	.952	
Opponents	.294	53	1418	226	417	63	8	23	198	565	.398	126	25	204	3	.360	7	46	57-72	1046	473	89	.945	

LOB - Team (321), Opp (361). DPs turned - Team (17), Opp (14). CI - Team (1), Cassel 1, Opp (1). IBB - Team (9), Love 9.  
Picked off - Olguin 2.

**(All games Sorted by Earned run avg)**

Player	era	w-l	app	gs	cg	sho	sv	ip	h	r	er	bb	so	2b	3b	hr	b/avg	wp	hp	bk	sfa	sha
Mills, Tiffany	2.98	13-16	33	30	18	2/0	0	174.0	198	102	74	70	107	26	3	6	.284	6	12	2	0	28
Chastka, Jessica	3.82	5-1	15	4	1	0/0	0	44.0	61	35	24	13	19	5	1	6	.332	4	3	0	4	6
Routzon, Stephanie	4.14	8-7	26	19	5	4/0	0	94.2	120	64	56	34	52	28	2	10	.308	3	6	0	2	11
-----																						
Fritz, Heather	2.88	1-2	15	0	0	0/0	1	34.0	38	25	14	9	26	4	2	1	.259	3	4	2	1	1
Totals	3.39	27-26	53	53	24	6/0	1	346.2	417	226	168	126	204	63	8	23	.294	16	25	4	7	46
Opponents	3.63	26-27	53	53	28	7/0	2	348.2	369	256	181	163	249	64	8	30	.266	27	28	2	9	33

PB - Team (8), Cassel 8, Opp (15). Pickoffs - Team (1), Cassel 1, Opp (1). SBA/ATT - Cassel (55-69), Mills (32-41), Routzon



**2011 ULM Warhawk Softball**  
**Conference statistics for ULM (as of May 09, 2011)**  
**(Sun Belt games only Sorted by Batting avg)**

Record: 10-14 Home: 6-6 Away: 4-8 Sun Belt: 10-14

Player	avg	gp-gs	ab	r	h	2b	3b	hr	rbi	tb	slg%	bb	hp	so	gdp	ob%	sf	sh	sb-att	po	a	e	fld%	
Olguin, Jessica	.430	24-24	79	19	34	2	1	0	8	38	.481	7	2	9	0	.489	0	1	10-12	17	1	2	.900	
Love, Brianna	.303	24-24	66	21	20	0	2	8	18	48	.727	24	0	9	0	.484	1	0	12-15	34	6	2	.952	
Salanoa, Janel	.297	23-22	74	12	22	6	0	3	14	37	.500	3	2	3	0	.333	2	0	5-7	27	50	10	.885	
Cassel, Roxane	.236	24-24	72	10	17	2	0	4	20	31	.431	11	1	15	0	.345	0	3	1-1	88	11	7	.934	
West, Elise	.234	24-24	64	4	15	0	0	0	0	15	.234	5	4	21	0	.329	0	0	1-1	176	9	3	.984	
Rivera, Melissa	.205	24-24	73	6	15	0	0	0	8	15	.205	2	1	10	1	.237	0	4	1-1	28	0	0	1.000	
Girardi, Katie	.190	22-20	58	1	11	4	0	0	12	15	.259	11	2	22	0	.333	1	2	1-2	21	34	4	.932	
Navarrete, Miyuki	.141	24-24	64	13	9	1	0	0	4	10	.156	8	1	12	1	.247	0	3	3-4	68	59	5	.962	
-----																								
Ayala, Regina	.179	15-14	39	0	7	0	0	0	4	7	.179	2	0	6	0	.220	0	1	0-0	5	3	1	.889	
Riojas, Samantha	.167	11-10	24	2	4	2	0	0	2	6	.250	1	0	7	0	.200	0	0	0-1	3	9	2	.857	
Pastor, Charlotte	.167	14-5	18	6	3	0	0	0	0	3	.167	0	1	13	0	.211	0	0	1-1	8	4	1	.923	
Dimattia, Elena	.000	18-1	3	6	0	0	0	0	0	0	.000	0	0	3	0	.000	0	0	2-2	0	0	0	.000	
Willis, Lacey	.000	7-0	0	4	0	0	0	0	0	0	.000	0	0	0	0	.000	0	0	2-2	0	0	0	.000	
Totals	.248	24	634	104	157	17	3	15	90	225	.355	74	14	130	2	.337	4	14	39-49	480	224	39	.948	
Opponents	.301	24	670	121	202	38	3	9	106	273	.407	69	11	81	1	.374	4	18	30-38	491	209	34	.954	

LOB - Team (147), Opp (173). DPs turned - Team (10), Opp (5). CI - Team (1), Cassel 1, Opp (1). IBB - Team (5), Love 5.  
Picked off - Olguin 1.

**(Sun Belt games only Sorted by Earned run avg)**

Player	era	w-l	app	gs	cg	sho	sv	ip	h	r	er	bb	so	2b	3b	hr	b/avg	wp	hp	bk	sfa	sha
Mills, Tiffany	3.66	5-9	16	14	6	0/0	0	80.1	93	52	42	38	48	15	0	3	.279	3	4	1	0	11
Chastka, Jessica	3.98	3-0	7	0	0	0/0	0	19.1	21	14	11	8	6	3	0	1	.292	3	1	0	1	3
Fritz, Heather	4.67	0-1	11	0	0	0/0	1	18.0	23	16	12	5	10	3	2	0	.280	3	4	2	1	0
Routzon, Stephanie	5.62	2-4	13	10	1	1/0	0	42.1	65	39	34	18	17	17	1	5	.355	2	2	0	2	4
Totals	4.33	10-14	24	24	7	1/0	1	160.0	202	121	99	69	81	38	3	9	.301	11	11	3	4	18
Opponents	3.29	14-10	24	24	15	3/0	1	163.2	157	104	77	74	130	17	3	15	.248	13	14	0	4	14

PB - Team (4), Cassel 4, Opp (5). SBA/ATT - Cassel (30-38), Mills (14-18), Routzon (10-13), Fritz (5-6), Chastka (1-1).



## ULM Game Highs

### BATTING

At bats:	40	at North Texas (Apr. 16)
Runs scored:	15	vs. Middle Tennessee (Mar. 27)
Hits:	15	vs. Middle Tennessee (Mar. 26)
	15	vs. Middle Tennessee (Mar. 27)
RBI's:	13	vs. Middle Tennessee (Mar. 27)
Doubles:	5	at Grambling State (Apr. 12)
Triples:	1	(eight times)
Home runs:	3	vs. Furman (Mar. 4)
Total bases:	28	vs. Furman (Mar. 4)
Walks:	8	vs. Georgia Southern (Mar. 5)
Strikeouts:	13	vs. No. 24 UL-Lafayette (May 7)
Sac hits:	2	(five times)
Sac flies:	2	vs. Middle Tennessee (Mar. 27)
Stolen bases:	5	(four times)
Hit by pitch:	3	at Florida Atlantic (Apr. 2)
Caught stealing:	3	vs. Baylor (Feb. 26)
Runners LOB:	16	vs. Sam Houston State (Feb. 27)
Hit into DP:	2	vs. Southern Utah (Feb. 19)

### FIELDING

Putouts:	30	at North Texas (Apr. 16)
Assists:	16	vs. Eastern Illinois (Feb. 12)
	16	at McNeese State (Apr. 28)
Errors:	5	vs. Southern Utah (Feb. 19)
Passed balls:	2	at McNeese State (Apr. 28)
DPs turned:	2	at No. 7 Tennessee (Mar. 4)
	2	vs. FIU (Apr. 9)
	2	at Western Kentucky (Apr. 22)

### PITCHING

Innings pitched:	10.0	at North Texas (Apr. 16)
Runs allowed:	14	vs. No. 6 Oklahoma (Feb. 19)
Earned runs:	11	vs. No. 6 Oklahoma (Feb. 19)
	11	vs. Middle Tennessee (Mar. 27)
Walks allowed:	9	vs. No. 24 UL-Lafayette (May 7)
Strikeouts:	9	vs. Middle Tennessee (Mar. 27)
Hits allowed:	18	vs. Middle Tennessee (Mar. 27)
Doubles allowed:	5	at Troy (Mar. 19)
Triples allowed:	2	at Western Kentucky (Apr. 23)
Homers allowed:	3	vs. Sam Houston State (Feb. 18)
	3	vs. FIU (Apr. 9)
Wild pitches:	3	at Troy (Mar. 19)
Hit batters:	2	(five times)

## Individual Game Highs

At bats	5	(10 times)
Runs scored	4	Brianna Love vs. SE Missouri State (Feb. 11)
Hits:	4	Jessica Olguin at Troy (Mar. 19)
	4	Jessica Olguin vs. Middle Tennessee (Mar. 26)
RBI's:	6	Roxy Cassel vs. Middle Tennessee (Mar. 27)
Doubles:	3	Brianna Love at Grambling State (Apr. 12)
Triples:	1	(eight times)
Home runs:	1	(30 times)
Total bases:	7	Brianna Love vs. South Alabama (Mar. 13)
	7	Roxy Cassel vs. Middle Tennessee (Mar. 27)
	7	Brianna Love vs. Nicholls State (Mar. 31)
Walks:	3	Brianna Love vs. Sam Houston State (Feb. 27)
	3	Brianna Love at Troy (Mar. 20)
	3	Brianna Love vs. Middle Tennessee (Mar. 26)
Strikeouts:	4	Katie Girardi at Florida Atlantic (Apr. 3)
Sac hits:	1	(33 times)
Sac flies:	1	(nine times)
Stolen bases:	3	Brianna Love vs. SE Missouri State (Feb. 11)
	3	Brianna Love vs. Middle Tennessee (Mar. 26)
Hit by pitch:	1	(28 times)
Caught stealing:	1	(22 times)
Runners LOB:	8	Elise West at Florida Atlantic (Apr. 2)

### FIELDING

Putouts:	14	Katie Girardi vs. Eastern Illinois (Feb. 12)
Assists:	8	Tiffany Mills at No. 7 Tennessee (Mar. 4)
Errors:	3	Janel Salanoa at Stephen F. Austin (Mar. 9)
Passed balls:	2	Roxy Cassel at McNeese State (Apr. 28)

### PITCHING

Innings pitched:	10.0	Tiffany Mills at North Texas (Apr. 16)
Runs allowed:	10	Tiffany Mills vs. No. 6 Oklahoma (Feb. 19)
Earned runs:	7	Tiffany Mills vs. No. 6 Oklahoma (Feb. 19)
Walks allowed:	7	Tiffany Mills vs. No. 24 UL-Lafayette (May 7)
Strikeouts:	7	Tiffany Mills vs. Middle Tennessee (Mar. 27)
	7	Tiffany Mills vs. Grambling State (Apr. 12)
	7	Stephanie Routzon vs. Grambling State (Apr. 19)
Hits allowed:	12	Tiffany Mills vs. No. 6 Oklahoma (Feb. 19)
Doubles allowed:	4	Stephanie Routzon at Troy (Mar. 19)
	4	Tiffany Mills at North Texas (Apr. 16)
Triples allowed:	2	Heather Fritz at Western Kentucky (Apr. 23)
Homers allowed:	2	(four times)
Wild pitches:	2	Tiffany Mills vs. No. 6 Oklahoma (Feb. 19)
	2	Stephanie Routzon at Troy (Mar. 19)
Hit batters:	2	(five times)

### BATTING

# Career Watch List

## BATTING AVERAGE

Name	AB	AVG
1. <b>Love, Brianna (08-11)</b>	<b>212-591</b>	<b>.359</b>
2. Tande, Lori (99-02)	242-706	.343
3. Boles, Stephanie (94-97)	233-695	.335
4. Goodman, Casey (00-03)	190-580	.328
5. Harris, Jackie (91-93)	171-534	.320

(minimum 250 AB)

## SLUGGING PERCENTAGE

Name	AB	SLG%
1. <b>Love, Brianna (08-11)</b>	<b>591</b>	<b>.690</b>
2. Tande, Lori (99-02)	706	.606
3. Goodman, Casey (00-03)	580	.600
4. Williams, Heather (04-07)	674	.497
5. Clampitt, Michelle (95-96)	314	.452

(minimum 250 AB)

## ON BASE PERCENTAGE

Name	AB	OB%
1. <b>Love, Brianna (08-11)</b>	<b>591</b>	<b>.471</b>
2. Dietz, Kristy (99-01)	458	.428
3. Goodman, Casey (00-03)	580	.411
4. Tande, Lori (99-02)	706	.399
5. Ward, Bette (81-82, 84)	267	.362

(minimum 250 AB)

## RUNS SCORED

Name	R
1. <b>Love, Brianna (08-11)</b>	<b>162</b>
2. Tande, Lori (99-02)	158
3. Baker, Kristen (02-05)	110
4. Dietz, Kristy (99-01)	107
5. Goodman, Casey (00-03)	106

## DOUBLES

Name	3B
1. Tande, Lori (99-02)	49
2. Williams, Heather (04-07)	42
3. Goodman, Casey (00-03)	37
4. <b>Love, Brianna (08-11)</b>	<b>36</b>
5. Baker, Kristen (02-05)	32

## TRIPLES

Name	3B
1. <b>Love, Brianna (08-11)</b>	<b>14</b>
1. Baker, Kristen (02-05)	14
3. Ward, Bette (81-82, 84)	11
3. Burrows, Kelly (91-92)	10
5. Aulds, Kathy (82, 84-85)	9
Harris, Jackie (91-93)	9
George, Millie (84-85)	9

## HOME RUNS

Name	HR
1. <b>Love, Brianna (08-11)</b>	<b>44</b>
2. Tande, Lori (99-02)	41
3. Goodman, Casey (00-03)	37
4. Williams, Heather (04-07)	34
5. Miller, Megan (06-09)	23

## RUNS BATTED IN

Name	RBI
1. Goodman, Casey (00-03)	147
2. Tande, Lori (99-02)	132
3. Williams, Heather (04-07)	130
4. <b>Love, Brianna (08-11)</b>	<b>118</b>
5. Boles, Stephanie (94-97)	79
6. <b>Cassel, Roxy (09-present)</b>	<b>78</b>

## TOTAL BASES

Name	TB
1. Tande, Lori (99-02)	428
2. <b>Love, Brianna (08-11)</b>	<b>408</b>
3. Goodman, Casey (00-03)	348
4. Williams, Heather (04-07)	335
5. Boles, Stephanie (94-97)	264

## BASE ON BALLS

Name	BB
1. <b>Love, Brianna (08-11)</b>	<b>125</b>
2. Goodman, Casey (00-03)	85
3. Williams, Heather (04-07)	73
4. Dietz, Kristy (99-01)	71
5. Baker, Calli (05-08)	63

## SAVES

Name	SV
1. Rittenhouse, Lindsay (05-08)	9
2. Van Oosbree, Annie (99-02)	6
T3. Arnold, Clara (85-88)	5
T3. <b>Fritz, Heather (08-11)</b>	<b>5</b>

## STRIKEOUTS

Name	SO
1. Dawson, Sarah (94-97)	1280
2. Van Oosbree, Annie (99-02)	561
3. Causey, Kandace (07-10)	531
4. Rittenhouse, Lindsay (05-08)	517
5. Stewart, Wilanne (83-86)	333
9. <b>Fritz, Heather (08-11)</b>	<b>135</b>

## FIELDING PERCENTAGE

Name	C-PO-E	F%
1. McNeil, Molly (08-09)	(396-27-2)	.995
2. Miles, Stacy (97)	(322-23-3)	.991
3. Dryer, Cathy (87-88)	(839-83-9)	.990
4. Miller, Megan (06-09)	(367-38-5)	.988
5. Goodman, Casey (00-03)	(942-143-15)	.986
10. <b>Cassel, Roxy (09-11)</b>	<b>(513-74-10)</b>	<b>.980</b>

(minimum 250 IP)



# SOFTBALL

# TV/Radio Chart



**19**  
Regina Ayala  
UT • 5-3 • Fr.  
Norwalk, Calif.



**14**  
Sarah Carriger  
IF/OF • 5-5 • Sr.  
Claremore, Okla.



**13**  
Roxy Cassel  
C/DP • 5-8 • Jr.  
Deer Park, Texas



**16**  
Jessica Chastka  
P • 5-8 • Jr.  
College Station, Texas



**3**  
Elena DiMattia  
OF • 5-4 • So.  
Sunset, La.



**23**  
Heather Fritz  
P • 5-10 • Sr.  
Salina, Kan.



**24**  
Katie Girardi  
IF/C • 5-8 • Jr.  
Pembroke Pines, Fla.



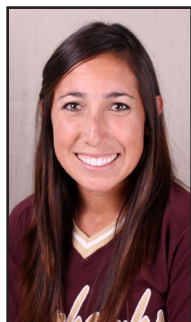
**4**  
Brianna Love  
OF • 5-8 • Sr.  
Garland, Texas



**22**  
Tiffany Mills  
P • 5-11 • R-So.  
Riverside, Calif.



**7**  
Miyuki Navarrete  
OF • 5-6 • Fr.  
San Jose, Calif.



**9**  
Jessica Olguin  
IF • 5-5 • Sr.  
Yorba Linda, Calif.



**10**  
Charlotte Pastor  
IF • 5-3 • So  
Metairie, La.



**17**  
Samantha Riojas  
P • 5-11 • Fr.  
Phoenix, Ariz.



**20**  
Melissa Rivera  
OF • 5-3 • Sr.  
Moreno Valley, Calif.



**12**  
Stephanie Routzon  
P/IF • 6-0 • Fr.  
Wheat Ridge, Colo.



**16**  
Janel Salanoa  
IF • 5-5 • So.  
San Jose, Calif.



**18**  
Elise West  
IF • 5-8 • So.  
Lafayette, La.



**2**  
Lacey Willis  
UT • 5-2 • So.  
Winnifield, La.



**Head Coach**  
Rosemary Holloway-Hill

# 2

# Lacey Willis

Sophomore • Utility • 5-2 • Winnfield, La. • Bossier Parish CC

2011 SEASON BESTS	
Hits.....	n/a
RBI.....	n/a
Runs.....	1, 5x, last at McNeese State, 04/28
Doubles.....	n/a
Triples.....	n/a
Home Runs.....	n/a
Walks.....	n/a
Stolen Bases.....	1, 3x, last at Troy (Game 2), 03/19

CAREER BESTS	
Hits.....	1, at Florida Atlantic, 04/22/10
RBI.....	n/a
Runs.....	1, 9x, last at McNeese State, 04/28/11
Doubles.....	n/a
Triples.....	n/a
Home Runs.....	n/a
Walks.....	n/a
Stolen Bases.....	1, 4x, last at Troy (Game 2), 03/19/11

Year	Avg	GP-GS	AB	R	H	2B	3B	HR	RBI	TB	SLG%	BB	HBP	SO	GDP	OB%	SF	SH	SB-ATT	PO	A	E	FLD%
2011	.000	16-0	1	5	0	0	0	0	0	0	.000	0	0	1	0	.000	0	0	3-4	2	0	0	1.000
<b>TOTAL</b>	<b>.000</b>	<b>16-0</b>	<b>1</b>	<b>5</b>	<b>0</b>	<b>0</b>	<b>0</b>	<b>0</b>	<b>0</b>	<b>0</b>	<b>.000</b>	<b>0</b>	<b>0</b>	<b>1</b>	<b>0</b>	<b>.000</b>	<b>0</b>	<b>0</b>	<b>3-4</b>	<b>2</b>	<b>0</b>	<b>0</b>	<b>1.000</b>

# 3

# Elena DiMattia

Sophomore • Outfielder • 5-4 • Sunset, La. • Beau Chene HS

2011 SEASON BESTS	
Hits.....	1, Indiana State, 02/13
RBI.....	
Runs.....	1, 15x, last Grambling State 04/19
Doubles.....	n/a
Triples.....	n/a
Home Runs.....	n/a
Walks.....	n/a
Stolen Bases.....	1, 5x, last at Western Kentucky, 04/23

CAREER BESTS	
Hits.....	1, 2x, last Indiana State, 02/13/11
RBI.....	n/a
Runs.....	1, 19x, last Grambling State 04/19/11
Doubles.....	n/a
Triples.....	n/a
Home Runs.....	n/a
Walks.....	n/a
Stolen Bases.....	1, 6x, last at Western Kentucky, 04/23/11

Year	Avg	GP-GS	AB	R	H	2B	3B	HR	RBI	TB	SLG%	BB	HBP	SO	GDP	OB%	SF	SH	SB-ATT	PO	A	E	FLD%
2010	.100	27-2	10	4	1	0	0	0	0	1	.100	1	0	5	0	.182	0	0	1-2	2	0	0	1.000
2011	.167	39-1	6	15	1	0	0	0	0	1	.167	0	0	3	0	.167	0	0	5-6	0	0	0	.000
<b>TOTAL</b>	<b>.125</b>	<b>66-3</b>	<b>16</b>	<b>19</b>	<b>2</b>	<b>0</b>	<b>0</b>	<b>0</b>	<b>0</b>	<b>2</b>	<b>.125</b>	<b>1</b>	<b>0</b>	<b>8</b>	<b>0</b>	<b>.176</b>	<b>0</b>	<b>0</b>	<b>6-8</b>	<b>2</b>	<b>0</b>	<b>0</b>	<b>1.000</b>

# 4

# Brianna Love

Senior • Outfielder • 5-8 • Garland, Texas • Garland HS

2011 SEASON BESTS	
Hits.....	3, 4x, last Alcorn State, 04/29
RBI.....	4, Middle Tennessee, 03/27
Runs.....	4, SE Missouri State, 02/11
Doubles.....	3, at Grambling State, 04/12
Triples.....	1, 4x, at Florida Atlantic, 04/02
Home Runs.....	1, 15x, Alcorn State, 04/29
Walks.....	3, 3x, Middle Tennessee (Game 1), 04/26
Stolen Bases.....	3, Middle Tennessee (Game 1), 04/26

CAREER BESTS	
Hits.....	4, at Florida Atlantic, 04/18/09
RBI.....	4, 3x, Middle Tennessee, 03/27/11
Runs.....	4, SE Missouri State, 02/11/11
Doubles.....	3, at Grambling State, 04/12/11
Triples.....	2, at Baylor, 03/01/09
Home Runs.....	2, 3x, Western Kentucky, 04/17/10
Walks.....	4, Western Kentucky, 04/18/10
Stolen Bases.....	3, Middle Tennessee (Game 1), 04/26/11

Year	Avg	GP-GS	AB	R	H	2B	3B	HR	RBI	TB	SLG%	BB	HBP	SO	GDP	OB%	SF	SH	SB-ATT	PO	A	E	FLD%
2008	.296	58-55	162	30	48	7	2	10	28	89	.549	13	2	21	0	.354	1	4	6-8	70	8	5	.940
2009	.378	52-52	143	33	54	9	6	8	26	99	.692	26	2	21	0	.477	1	3	15-18	76	11	5	.946
2010	.394	50-50	137	41	54	8	2	11	25	99	.723	41	1	21	0	.533	1	0	15-19	60	11	2	.973
2011	.376	53-53	149	58	56	12	4	15	39	121	.812	45	1	21	0	.515	3	0	27-31	68	13	3	.964
<b>TOTAL</b>	<b>.359</b>	<b>213-210</b>	<b>591</b>	<b>162</b>	<b>212</b>	<b>36</b>	<b>14</b>	<b>44</b>	<b>118</b>	<b>408</b>	<b>.690</b>	<b>125</b>	<b>6</b>	<b>84</b>	<b>0</b>	<b>.471</b>	<b>6</b>	<b>7</b>	<b>63-76</b>	<b>274</b>	<b>43</b>	<b>15</b>	<b>.955</b>

# 7

# Miyuki Navarrete

Freshman • Outfielder • 5-6 • San Jose, Calif. • Archbishop Mitty HS

### 2011 SEASON BESTS

Hits..... 2, 5x, at North Texas (Game 1), 04/16  
 RBIs ..... 2, 2x, UL-Lafayette (Game 2), 05/07  
 Runs..... 2, 5x, at North Texas (Game 1), 04/16  
 Doubles..... 1, 2x, UL-Lafayette (Game 2), 05/07  
 Triples ..... n/a  
 Home Runs ..... 1, vs. Oklahoma, 02/19  
 Walks..... 2, FIU, 04/10  
 Stolen Bases..... 2, 4x, at North Texas (Game 1), 04/16

### CAREER BESTS

Hits..... 2, 5x, at North Texas (Game 1), 04/16/11  
 RBIs ..... 2, 2x, UL-Lafayette (Game 2), 05/07/11  
 Runs..... 2, 5x, at North Texas (Game 1), 04/16/11  
 Doubles..... 1, 2x, UL-Lafayette (Game 2), 05/07/11  
 Triples ..... n/a  
 Home Runs ..... 1, vs. Oklahoma, 02/19/11  
 Walks..... 2, FIU, 04/10/11  
 Stolen Bases..... 2, 4x, at North Texas (Game 1), 04/16

Year	Avg	GP-GS	AB	R	H	2B	3B	HR	RBI	TB	SLG%	BB	HBP	SO	GDP	OB%	SF	SH	SB-ATT	PO	A	E	FLD%
2011	.221	53-53	140	31	31	2	0	1	14	36	.257	12	3	22	1	.297	0	8	15-20	142	120	12	.956
<b>TOTAL</b>	<b>.221</b>	<b>53-53</b>	<b>140</b>	<b>31</b>	<b>31</b>	<b>2</b>	<b>0</b>	<b>1</b>	<b>14</b>	<b>36</b>	<b>.257</b>	<b>12</b>	<b>3</b>	<b>22</b>	<b>1</b>	<b>.297</b>	<b>0</b>	<b>8-15</b>	<b>20</b>	<b>142</b>	<b>120</b>	<b>12</b>	<b>.956</b>

# 9

# Jessica Olguin

Senior • Infielder • 5-5 • Yorba Linda, Calif. • Esperanza HS

### 2011 SEASON BESTS

Hits..... 4, 2x, Middle Tennessee, 03/26  
 RBIs ..... 2, 5x, at North Texas (Game 1), 04/16  
 Runs..... 3, 2x, Sam Houston State, 02/18  
 Doubles..... 1, 6x, FIU, 04/10  
 Triples ..... 1, FIU (Game 1), 04/09  
 Home Runs ..... n/a  
 Walks..... 2, South Alabama, 03/12  
 Stolen Bases..... 2, 2x, FIU (Game 1), 04/09

### CAREER BESTS

Hits..... 4, 2x, Middle Tennessee, 03/26/11  
 RBIs ..... 4, vs. Wagner, 02/24/08  
 Runs..... 3, 2x, Sam Houston State, 02/18/11  
 Doubles..... 1, 7x, FIU, 04/10/11  
 Triples ..... 1, FIU (Game 1), 04/09/11  
 Home Runs ..... n/a  
 Walks..... 2, 6x, South Alabama, 03/12/11  
 Stolen Bases..... 2, 2x, FIU (Game 1), 04/09

Year	Avg	GP-GS	AB	R	H	2B	3B	HR	RBI	TB	SLG%	BB	HBP	SO	GDP	OB%	SF	SH	SB-ATT	PO	A	E	FLD%
2008	.231	55-52	147	13	34	1	0	0	10	35	.238	13	0	29	0	.294	0	6	5-5	59	61	15	.889
2009	.082	48-47	73	12	6	0	0	0	3	6	.082	5	1	16	0	.152	0	12	3-3	88	50	16	.896
2010	.050	35-13	40	5	2	0	0	0	1	2	.050	2	0	10	0	.095	0	5	1-1	28	22	1	.980
2011	.345	53-53	177	37	61	6	1	0	18	69	.390	10	2	22	0	.386	0	5	17-21	34	2	2	.947
<b>TOTAL</b>	<b>.236</b>	<b>191-165</b>	<b>437</b>	<b>67</b>	<b>103</b>	<b>7</b>	<b>1</b>	<b>0</b>	<b>32</b>	<b>112</b>	<b>.256</b>	<b>30</b>	<b>3</b>	<b>77</b>	<b>0</b>	<b>.289</b>	<b>0</b>	<b>28</b>	<b>26-30</b>	<b>209</b>	<b>135</b>	<b>34</b>	<b>.910</b>

# 10

# Charlotte Pastor

Sophomore • Infielder • 5-3 • Metairie, La. • St. Mary's Dominican HS

### 2010 SEASON BESTS

Hits..... 1, 4x, UL-Lafayette (Game 2), 05/07  
 RBIs ..... n/a  
 Runs..... 2, Middle Tennessee, 03/27  
 Doubles..... n/a  
 Triples ..... n/a  
 Home Runs ..... n/a  
 Walks..... 1, 3x, at Stephen F. Austin, 03/09  
 Stolen Bases..... 1, Middle Tennessee, 03/26

### CAREER BESTS

Hits..... 1, 5x, UL-Lafayette (Game 2), 05/07  
 RBIs ..... n/a  
 Runs..... 2, Middle Tennessee, 03/27/11  
 Doubles..... n/a  
 Triples ..... n/a  
 Home Runs ..... n/a  
 Walks..... 1, 3x, at Stephen F. Austin, 03/09  
 Stolen Bases..... 1, 3x, Middle Tennessee, 03/26

Year	Avg	GP-GS	AB	R	H	2B	3B	HR	RBI	TB	SLG%	BB	HBP	SO	GDP	OB%	SF	SH	SB-ATT	PO	A	E	FLD%
2010	.333	21-0	3	4	1	0	1	0	0	3	1.000	0	0	2	0	.333	0	0	2	4	0	0	0.000
2011	.108	28-9	37	6	4	0	0	0	0	4	.108	3	2	21	1	.214	0	0	1	2	8	4	1.923
<b>TOTAL</b>	<b>.125</b>	<b>49-9</b>	<b>40</b>	<b>10</b>	<b>5</b>	<b>0</b>	<b>1</b>	<b>0</b>	<b>0</b>	<b>7</b>	<b>.175</b>	<b>3</b>	<b>2</b>	<b>23</b>	<b>1</b>	<b>.222</b>	<b>0</b>	<b>0</b>	<b>3</b>	<b>6</b>	<b>8</b>	<b>4</b>	<b>1.923</b>

# 12

# Stephanie Routzon

Freshman • Pitcher • 6-0 • Wheat Ridge, Colo. • Wheat Ridge HS

### 2011 SEASON BESTS

Strikeouts	7, Grambling State, 04/19
Innings Pitched	7.0, FIU, 04/10
Fewest Hits/CG	0, Grambling State, 04/19
Fewest Walks/CG	0, Grambling State, 04/19
Fewest Runs/CG	0, Grambling State, 04/19

### CAREER BESTS

Strikeouts	7, Grambling State, 04/19/11
Innings Pitched	7.0, FIU, 04/10/11
Fewest Hits/CG	0, Grambling State, 04/19/11
Fewest Walks/CG	0, Grambling State, 04/19/11
Fewest Runs/CG	0, Grambling State, 04/19/11

Year	Avg	GP-GS	AB	R	H	2B	3B	HR	RBI	TB	SLG%	BB	HBP	SO	GDP	OB%	SF	SH	SB-ATT	PO	A	E	FLD%
2011	.000	0-0	0	0	0	0	0	0	0	0	.000	0	0	0	0	.000	0	0	0-0	3	20	1	.958
<b>TOTAL</b>	<b>.000</b>	<b>0-0</b>	<b>0</b>	<b>0</b>	<b>0</b>	<b>0</b>	<b>0</b>	<b>0</b>	<b>0</b>	<b>0</b>	<b>.000</b>	<b>0</b>	<b>0</b>	<b>0</b>	<b>0</b>	<b>.000</b>	<b>0</b>	<b>0</b>	<b>0-0</b>	<b>3</b>	<b>20</b>	<b>1</b>	<b>.958</b>

Year	ERA	W	L	App	GS	CG	SHO	SV	IP	H	R	ER	BB	SO	2B	3B	HR	WP	HBP	BK	SFA	SHA
2011	4.14	8	7	26	19	5	4	0	94.2	120	64	56	34	52	28	2	10	3	6	0	2	11
<b>TOTAL</b>	<b>4.14</b>	<b>8</b>	<b>7</b>	<b>26</b>	<b>19</b>	<b>5</b>	<b>4</b>	<b>0</b>	<b>94.2</b>	<b>120</b>	<b>64</b>	<b>56</b>	<b>34</b>	<b>52</b>	<b>28</b>	<b>2</b>	<b>10</b>	<b>3</b>	<b>6</b>	<b>0</b>	<b>2</b>	<b>11</b>

# 13

# Roxy Cassel

Junior • Catcher • 5-8 • Deer Park, Texas • Deer Park HS

### 2011 SEASON BESTS

Hits	3, Middle Tennessee, 03/27
RBI	6, Middle Tennessee, 03/27
Runs	3, vs. Georgia Southern, 03/05
Doubles	1, 7x, Alcorn State, 04/29
Triples	n/a
Home Runs	1, 5x, at Western Kentucky (Game 2), 04/22
Walks	2, 3x, Grambling State, 04/19
Stolen Bases	1, 4x, FIU (Game 1), 04/09

### CAREER BESTS

Hits	3, 3x, Middle Tennessee, 03/27/11
RBI	6, Middle Tennessee, 03/27/11
Runs	3, vs. Georgia Southern, 03/05
Doubles	2, North Dakota, 02/28/10
Triples	1, Houston Baptist, 02/26/10
Home Runs	2, Centenary, 03/16/10
Walks	2, 10x, Grambling State, 04/19/11
Stolen Bases	2, vs. South Dakota State, 02/21/09

Year	Avg	GP-GS	AB	R	H	2B	3B	HR	RBI	TB	SLG%	BB	HBP	SO	GDP	OB%	SF	SH	SB-ATT	PO	A	E	FLD%
2009	.192	48-45	104	12	20	3	0	1	6	26	.250	14	2	30	0	.300	0	3	5-5	251	40	6	.980
2010	.324	50-50	145	20	47	7	1	7	29	77	.531	17	1	32	1	.392	3	5	1-2	288	38	4	.988
2011	.265	53-53	155	24	41	7	0	5	43	63	.406	28	2	26	0	.384	0	4	4-4	223	32	8	.970
<b>TOTAL</b>	<b>.267</b>	<b>151-148</b>	<b>404</b>	<b>56</b>	<b>108</b>	<b>17</b>	<b>1</b>	<b>13</b>	<b>78</b>	<b>166</b>	<b>.411</b>	<b>59</b>	<b>5</b>	<b>88</b>	<b>1</b>	<b>.365</b>	<b>3</b>	<b>12</b>	<b>10-11</b>	<b>762</b>	<b>110</b>	<b>18</b>	<b>.980</b>

# 15

# Jessica Chastka

Junior • Pitcher • 5-8 • College Station, Texas • A&M Consolidated HS

### 2011 SEASON BESTS

Strikeouts	4, SE Missouri State, 02/12
Innings Pitched	7.0, SE Missouri State, 02/12
Fewest Hits/CG	7, SE Missouri State, 02/12
Fewest Walks/CG	1, SE Missouri State, 02/12
Fewest Runs/CG	1, SE Missouri State, 02/12

### CAREER BESTS

Strikeouts	7, vs. South Dakota State, 02/21/09
Innings Pitched	7.0, 3x, Houston Baptist, 02/26/10
Fewest Hits/CG	3, Central Arkansas, 02/14/09
Fewest Walks/CG	0, 3x, Houston Baptist, 02/26/10
Fewest Runs/CG	0, Houston Baptist, 02/26/10

Year	Avg	GP-GS	AB	R	H	2B	3B	HR	RBI	TB	SLG%	BB	HBP	SO	GDP	OB%	SF	SH	SB-ATT	PO	A	E	FLD%
2009	.000	1-0	0	0	0	0	0	0	0	0	.000	0	0	0	0	.000	0	0	0-1	3	10	4	.765
2010	.000	0-0	0	0	0	0	0	0	0	0	.000	0	0	0	0	.000	0	0	0-0	3	1	0	1.000
2011	.000	0-0	0	0	0	0	0	0	0	0	.000	0	0	0	0	.000	0	0	0-0	3	6	0	1.000
<b>TOTAL</b>	<b>.000</b>	<b>1-0</b>	<b>0</b>	<b>0</b>	<b>0</b>	<b>0</b>	<b>0</b>	<b>0</b>	<b>0</b>	<b>0</b>	<b>.000</b>	<b>0</b>	<b>0</b>	<b>0</b>	<b>0</b>	<b>.000</b>	<b>0</b>	<b>0</b>	<b>0-1</b>	<b>9</b>	<b>17</b>	<b>4</b>	<b>.867</b>

Year	ERA	W	L	App	GS	CG	SHO	SV	IP	H	R	ER	BB	SO	2B	3B	HR	WP	HBP	BK	SFA	SHA
2009	5.32	3	4	18	6	2	1	1	47.1	69	46	36	9	24	15	1	9	6	4	5	0	8
2010	3.45	3	1	7	4	2	1	0	24.1	30	19	12	4	19	3	0	6	3	4	0	2	3
2011	3.82	5	1	15	4	1	0	0	44.0	61	35	24	13	19	5	1	6	4	3	0	4	6
<b>TOTAL</b>	<b>4.36</b>	<b>11</b>	<b>6</b>	<b>40</b>	<b>14</b>	<b>5</b>	<b>2</b>	<b>0</b>	<b>115.2</b>	<b>160</b>	<b>100</b>	<b>72</b>	<b>26</b>	<b>62</b>	<b>23</b>	<b>2</b>	<b>21</b>	<b>13</b>	<b>11</b>	<b>5</b>	<b>6</b>	<b>17</b>

# 16

# Janel Salanoa

Sophomore • Infielder • 5-5 • San Jose, Calif. • Evergreen Valley HS

### 2011 SEASON BESTS

Hits.....3, 2x, at Florida Atlantic (Game 2), 04/02  
 RBIs.....4, SE Missouri State, 02/12  
 Runs.....3, 2x, vs. Georgia Southern, 03/05  
 Doubles.....1, 11x, at Arkansas, 04/26  
 Triples.....1, Stephen F. Austin, 03/23  
 Home Runs.....1, 7x, at Florida Atlantic (Game 2), 04/02  
 Walks.....2, 2x, Georgia Southern, 03/05  
 Stolen Bases.....2, 2x, FIU (Game 2), 04/09

### CAREER BESTS

Hits.....3, 5x, at Florida Atlantic (Game 2), 04/02/11  
 RBIs.....4, 2x, SE Missouri State, 02/12/11  
 Runs.....3, 2x, vs. Georgia Southern, 03/05/11  
 Doubles.....2, Oregon State, 02/20/10  
 Triples.....1, Stephen F. Austin, 03/23/11  
 Home Runs.....1, 11x, at Florida Atlantic (Game 2), 04/02/11  
 Walks.....2, 4x, Georgia Southern 03/05/11  
 Stolen Bases.....2, 2x, FIU (Game 2), 04/09/11

Year	Avg	GP-GS	AB	R	H	2B	3B	HR	RBI	TB	SLG%	BB	HBP	SO	GDP	OB%	SF	SH	SB-ATT	PO	A	E	FLD%
2010	.286	50-50	147	29	42	6	0	4	28	60	.408	15	2	16	0	.358	1	5	7-11	87	82	21	.889
2011	.323	52-51	161	32	52	11	1	7	35	86	.534	13	3	5	0	.376	4	2	9-12	74	104	21	.894
<b>TOTAL</b>	<b>.305</b>	<b>102-101</b>	<b>308</b>	<b>61</b>	<b>94</b>	<b>17</b>	<b>1</b>	<b>11</b>	<b>63</b>	<b>146</b>	<b>.474</b>	<b>28</b>	<b>5</b>	<b>21</b>	<b>0</b>	<b>.367</b>	<b>5</b>	<b>7</b>	<b>16-23</b>	<b>161</b>	<b>186</b>	<b>42</b>	<b>.892</b>

# 17

# Samantha Riojas

Freshman • Infielder • 5-6 • Phoenix, Ariz. • Centennial HS

### 2011 SEASON BESTS

Hits.....3, vs. Sam Houston State, 02/18  
 RBIs.....2, vs. Furman, 03/24  
 Runs.....2, 2x, vs. Furman, 03/24/11  
 Doubles.....1, 5x, Alcorn State, 04/29  
 Triples.....1, vs. Furman, 03/24  
 Home Runs.....1, vs. Sam Houston State, 02/18  
 Walks.....1, 3x, at North Texas (Game 2), 04/16  
 Stolen Bases.....1, vs. Sam Houston State, 02/18

### CAREER BESTS

Hits.....3, Sam Houston State, 02/18/11  
 RBIs.....2, Furman, 03/24/11  
 Runs.....2, 2x, Furman, 03/24/11  
 Doubles.....1, 5x, Alcorn State, 04/29/11  
 Triples.....1, Furman, 03/24/11  
 Home Runs.....1, Sam Houston State, 02/18/11  
 Walks.....1, 3x, North Texas (Game 2), 04/16  
 Stolen Bases.....1, Sam Houston State, 02/18/11

Year	Avg	GP-GS	AB	R	H	2B	3B	HR	RBI	TB	SLG%	BB	HBP	SO	GDP	OB%	SF	SH	SB-ATT	PO	A	E	FLD%
2011	.209	37-33	91	11	19	5	1	1	7	29	.319	3	1	23	1	.242	0	1	1-2	15	38	8	.869
<b>TOTAL</b>	<b>.209</b>	<b>37-33</b>	<b>91</b>	<b>11</b>	<b>19</b>	<b>5</b>	<b>1</b>	<b>1</b>	<b>7</b>	<b>29</b>	<b>.319</b>	<b>3</b>	<b>1</b>	<b>23</b>	<b>1</b>	<b>.242</b>	<b>0</b>	<b>1</b>	<b>1-2</b>	<b>15</b>	<b>38</b>	<b>8</b>	<b>.869</b>

# 18

# Elise West

Sophomore • Infielder • 5-8 • Lafayette, La. • Lafayette HS

### 2011 SEASON BESTS

Hits.....2, 6x, at Western Kentucky (Game 2), 04/22  
 RBIs.....2, 2x, Grambling State, 04/19  
 Runs.....2, Stephen F. Austin, 04/23  
 Doubles.....1, 2x, Stephen F. Austin, 04/23  
 Triples.....n/a  
 Home Runs.....n/a  
 Walks.....1, 7x, UL-Lafayette, 05/08  
 Stolen Bases.....2, vs. Furman, 03/04

### CAREER BESTS

Hits.....3, Southeast Missouri State, 02/13/10  
 RBIs.....2, 2x, Grambling State, 04/19/11  
 Runs.....2, 3x, Stephen F. Austin, 04/23/11  
 Doubles.....1, 3x, Stephen F. Austin, 04/23/11  
 Triples.....1, Grambling State, 03/30/10  
 Home Runs.....n/a  
 Walks.....1, 13x, UL-Lafayette, 05/08/11  
 Stolen Bases.....2, vs. Furman, 03/04

Year	Avg	GP-GS	AB	R	H	2B	3B	HR	RBI	TB	SLG%	BB	HBP	SO	GDP	OB%	SF	SH	SB-ATT	PO	A	E	FLD%
2010	.194	48-44	103	11	20	1	1	0	4	23	.223	9	4	34	0	.284	0	1	2-4	259	11	5	.982
2011	.234	42-42	111	9	26	2	0	0	6	28	.252	7	8	36	0	.325	0	1	5-5	296	18	5	.984
<b>TOTAL</b>	<b>.215</b>	<b>90-86</b>	<b>214</b>	<b>20</b>	<b>46</b>	<b>3</b>	<b>1</b>	<b>0</b>	<b>10</b>	<b>51</b>	<b>.238</b>	<b>16</b>	<b>12</b>	<b>70</b>	<b>0</b>	<b>.306</b>	<b>0</b>	<b>2</b>	<b>7-9</b>	<b>555</b>	<b>29</b>	<b>10</b>	<b>.983</b>

# 19

# Regina Ayala

Freshman • Utility • 5-3 • Norwalk, Calif. • Santa Fe HS

### 2011 SEASON BESTS

Hits..... 2, 2x, Stephen F. Austin, 03/23  
 RBIs ..... 2, 2x, Stephen F. Austin, 03/23  
 Runs..... 2, 2x, Stephen F. Austin, 03/23  
 Doubles..... 1, 3x, at Grambling State, 04/12  
 Triples ..... n/a  
 Home Runs ..... n/a  
 Walks..... 1, 6x, Alcorn State, 04/29  
 Stolen Bases..... n/a

### CAREER BESTS

Hits..... 2, 2x, Stephen F. Austin, 03/23/11  
 RBIs ..... 2, 2x, Stephen F. Austin, 03/23/11  
 Runs..... 2, 2x, Stephen F. Austin, 03/23/11  
 Doubles..... 1, 3x, at Grambling State, 04/12/11  
 Triples ..... n/a  
 Home Runs ..... n/a  
 Walks..... 1, 6x, Alcorn State, 04/29/11  
 Stolen Bases..... n/a

Year	Avg	GP-GS	AB	R	H	2B	3B	HR	RBI	TB	SLG%	BB	HBP	SO	GDP	OB%	SF	SH	SB-ATT	PO	A	E	FLD%
2011	.195	34-29	77	7	15	3	0	0	11	18	.234	6	1	11	0	.262	0	2	0-0	7	12	3	.864
<b>TOTAL</b>	<b>.195</b>	<b>34-29</b>	<b>77</b>	<b>7</b>	<b>15</b>	<b>3</b>	<b>0</b>	<b>0</b>	<b>11</b>	<b>18</b>	<b>.234</b>	<b>6</b>	<b>1</b>	<b>11</b>	<b>0</b>	<b>.262</b>	<b>0</b>	<b>2</b>	<b>0-0</b>	<b>7</b>	<b>12</b>	<b>3</b>	<b>.864</b>

# 20

# Melissa Rivera

Senior • Outfielder • 5-3 • Moreno Valley, Calif. • Canyon Springs HS

### 2011 SEASON BESTS

Hits..... 3, vs. Furman, 03/04  
 RBIs ..... 3, 2x, FIU (Game 2), 04/09  
 Runs..... 2, 2x, Stephen F. Austin, 03/23  
 Doubles..... 2, vs. Furman, 03/24  
 Triples ..... n/a  
 Home Runs ..... n/a  
 Walks..... 1, 4x, at Florida Atlantic (Game 2), 04/02  
 Stolen Bases..... 1, 3x, Alcorn State, 04/29

### CAREER BESTS

Hits..... 3, 4x, vs. Furman, 03/04/11  
 RBIs ..... 3, 2x, FIU (Game 2), 04/09/11  
 Runs..... 2, 5x, Stephen F. Austin, 03/23/11  
 Doubles..... 3, vs. South Dakota State, 02/21/09  
 Triples ..... n/a  
 Home Runs ..... 1, Centenary, 03/16/10  
 Walks..... 2, vs. Florida Atlantic, 05/07/08  
 Stolen Bases..... 1, 8x, Alcorn State, 04/29/11

Year	Avg	GP-GS	AB	R	H	2B	3B	HR	RBI	TB	SLG%	BB	HBP	SO	GDP	OB%	SF	SH	SB-ATT	PO	A	E	FLD%
2008	.183	35-20	60	6	11	0	0	0	5	11	.183	6	1	6	0	.265	1	1	1-2	32	24	4	.933
2009	.187	49-41	107	9	20	6	0	0	5	26	.243	5	1	15	0	.230	0	6	1-3	33	2	0	1.000
2010	.280	50-50	150	15	42	4	0	1	17	49	.327	8	0	11	0	.313	2	2	5-6	40	2	1	.977
2011	.242	53-53	165	12	40	11	0	0	26	51	.309	4	1	18	2	.265	0	7	3-3	47	0	0	1.000
<b>TOTAL</b>	<b>.234</b>	<b>187-164</b>	<b>482</b>	<b>42</b>	<b>113</b>	<b>21</b>	<b>0</b>	<b>1</b>	<b>53</b>	<b>137</b>	<b>.284</b>	<b>23</b>	<b>3</b>	<b>50</b>	<b>2</b>	<b>.272</b>	<b>3</b>	<b>16</b>	<b>10-14</b>	<b>152</b>	<b>28</b>	<b>5</b>	<b>.973</b>

# 22

# Tiffany Mills

Redshirt Sophomore • Pitcher • 5-11 • Riverside, Calif. • Martin Luther King HS

### 2011 SEASON BESTS

Strikeouts ..... 7, 2x, at Grambling State, 04/12  
 Innings Pitched ..... 10.0, at North Texas (Game 1), 04/16  
 Fewest Hits/CG ..... 2, at Grambling State, 04/12  
 Fewest Walks/CG ..... 0, 2x, at Grambling State, 04/12  
 Fewest Runs/CG ..... 0, 2x, at Grambling State, 04/12

### CAREER BESTS

Strikeouts ..... 11, McNeese State, 02/24/10  
 Innings Pitched ..... 10.0, at North Texas (Game 1), 04/16/11  
 Fewest Hits/CG ..... 2, 2x, at Grambling State, 04/12/11  
 Fewest Walks/CG ..... 0, 3x, at Grambling State, 04/12/11  
 Fewest Runs/CG ..... 0, 2x, at Grambling State, 04/12/11

Year	Avg	GP-GS	AB	R	H	2B	3B	HR	RBI	TB	SLG%	BB	HBP	SO	GDP	OB%	SF	SH	SB-ATT	PO	A	E	FLD%
2010	.000	0-0	0	0	0	0	0	0	0	0	.000	0	0	0	0	.000	0	0	0-0	2	40	5	.894
2011	.000	0-0	0	0	0	0	0	0	0	0	.000	0	0	0	0	.000	0	0	0-0	7	73	3	.964
<b>TOTAL</b>	<b>.000</b>	<b>0-0</b>	<b>0</b>	<b>0</b>	<b>0</b>	<b>0</b>	<b>0</b>	<b>0</b>	<b>0</b>	<b>0</b>	<b>.000</b>	<b>0</b>	<b>0</b>	<b>0</b>	<b>0</b>	<b>.000</b>	<b>0</b>	<b>0</b>	<b>0-0</b>	<b>9</b>	<b>113</b>	<b>8</b>	<b>.938</b>

Year	ERA	W	L	App	GS	CG	SHO	SV	IP	H	R	ER	BB	SO	2B	3B	HR	WP	HBP	BK	SFA	SHA
2010	3.64	7	9	24	21	9	0	0	119.1	151	88	62	32	95	23	0	7	5	12	0	1	22
2011	2.98	13	16	33	30	18	2	0	174.0	198	102	74	70	107	26	3	6	6	12	2	0	28
<b>TOTAL</b>	<b>3.25</b>	<b>20</b>	<b>25</b>	<b>57</b>	<b>51</b>	<b>27</b>	<b>2</b>	<b>0</b>	<b>293.1</b>	<b>349</b>	<b>190</b>	<b>136</b>	<b>102</b>	<b>202</b>	<b>49</b>	<b>3</b>	<b>13</b>	<b>11</b>	<b>24</b>	<b>2</b>	<b>1</b>	<b>50</b>

# 23

# Heather Fritz

Senior • Pitcher • 5-10 • Salina, Kan. • Salina South HS

### 2011 SEASON BESTS

Strikeouts .....6, vs. Southern Utah, 02/19  
 Innings Pitched .....5.2, at Stephen F. Austin, 03/09  
 Fewest Hits/CG ..... n/a  
 Fewest Walks/CG ..... n/a  
 Fewest Runs/CG ..... n/a

### CAREER BESTS

Strikeouts .....10, Northwestern State, 04/16/08  
 Innings Pitched .....7.0, 5x, South Alabama, 04/04/09  
 Fewest Hits/CG .....2, South Alabama, 04/04/09  
 Fewest Walks/CG .....0, 3x, Southeast Missouri State, 02/14/09  
 Fewest Runs/CG .....0, 2x, South Alabama, 04/04/09

Year	Avg	GP-GS	AB	R	H	2B	3B	HR	RBI	TB	SLG%	BB	HBP	SO	GDP	OB%	SF	SH	SB-ATT	PO	A	E	FLD%
2008	.000	16-9	0	0	0	0	0	0	0	0	.000	0	0	0	0	.000	0	0	0-0	0	12	6	.667
2010	.000	0-0	0	0	0	0	0	0	0	0	.000	0	0	0	0	.000	0	0	0-0	3	16	1	.950
2011	.000	0-0	0	0	0	0	0	0	0	0	.000	0	0	0	0	.000	0	0	0-0	0	4	2	.667
<b>TOTAL</b>	<b>.000</b>	<b>16-9</b>	<b>0</b>	<b>0</b>	<b>0</b>	<b>0</b>	<b>0</b>	<b>0</b>	<b>0</b>	<b>0</b>	<b>.000</b>	<b>0</b>	<b>0</b>	<b>0</b>	<b>0</b>	<b>.000</b>	<b>0</b>	<b>0</b>	<b>0-0</b>	<b>3</b>	<b>32</b>	<b>9</b>	<b>.795</b>

Year	ERA	W	L	App	GS	CG	SHO	SV	IP	H	R	ER	BB	SO	2B	3B	HR	WP	HBP	BK	SFA	SHA
2009	3.50	3	12	26	18	6	1	0	102.0	134	72	51	28	73	22	2	7	10	10	2	2	13
2010	1.55	4	5	22	1	0	0	1	54.1	54	19	12	16	36	10	2	1	3	6	0	0	2
2011	2.88	1	2	15	0	0	0	0	34.0	38	25	14	9	26	4	2	1	3	4	2	1	1
<b>TOTAL</b>	<b>2.83</b>	<b>8</b>	<b>19</b>	<b>63</b>	<b>19</b>	<b>6</b>	<b>1</b>	<b>1</b>	<b>190.1</b>	<b>226</b>	<b>116</b>	<b>77</b>	<b>53</b>	<b>135</b>	<b>36</b>	<b>6</b>	<b>9</b>	<b>16</b>	<b>20</b>	<b>4</b>	<b>3</b>	<b>16</b>

# 24

# Katie Girardi

Junior • Infielder • 5-8 • Pembroke Pines, Fla. • McArthur HS

### 2011 SEASON BESTS

Hits .....3, Middle Tennessee (Game 1), 03/26  
 RBIs .....3, at Troy (Game 2), 03/19  
 Runs .....2, Centenary, 03/22  
 Doubles .....2, Middle Tennessee (Game 1), 03/26  
 Triples .....1, Centenary, 03/22  
 Home Runs .....1, Northwestern State, 02/11  
 Walks .....2, 6x, Nicholls State, 03/31  
 Stolen Bases .....1, 2x, Middle Tennessee (Game 1), 03/26

### CAREER BESTS

Hits .....3, Middle Tennessee (Game 1), 03/26/11  
 RBIs .....4, Texas A&M, 02/21/10  
 Runs .....2, 2x, Centenary, 03/22/11  
 Doubles .....2, Middle Tennessee (Game 1), 03/26/11  
 Triples .....1, Centenary, 03/22/11  
 Home Runs .....1, 5x, Northwestern State, 02/11/11  
 Walks .....2, 8x, Nicholls State, 03/31/11  
 Stolen Bases .....1, 3x, Middle Tennessee (Game 1), 03/26/11

Year	Avg	GP-GS	AB	R	H	2B	3B	HR	RBI	TB	SLG%	BB	HBP	SO	GDP	OB%	SF	SH	SB-ATT	PO	A	E	FLD%
2009	.183	49-45	126	9	23	3	0	2	16	32	.254	12	5	36	1	.278	1	1	1-1	52	59	8	.933
2010	.212	47-42	99	4	21	2	0	2	18	29	.293	16	3	34	0	.333	2	1	0-0	14	30	3	.936
2011	.200	49-47	115	9	23	5	1	1	19	33	.287	32	4	40	0	.386	2	3	2-4	111	48	8	.952
<b>TOTAL</b>	<b>.197</b>	<b>145-134</b>	<b>340</b>	<b>22</b>	<b>67</b>	<b>10</b>	<b>1</b>	<b>5</b>	<b>53</b>	<b>94</b>	<b>.276</b>	<b>60</b>	<b>12</b>	<b>110</b>	<b>1</b>	<b>.333</b>	<b>5</b>	<b>5</b>	<b>3-5</b>	<b>177</b>	<b>137</b>	<b>19</b>	<b>.943</b>